



**AlfaFood**

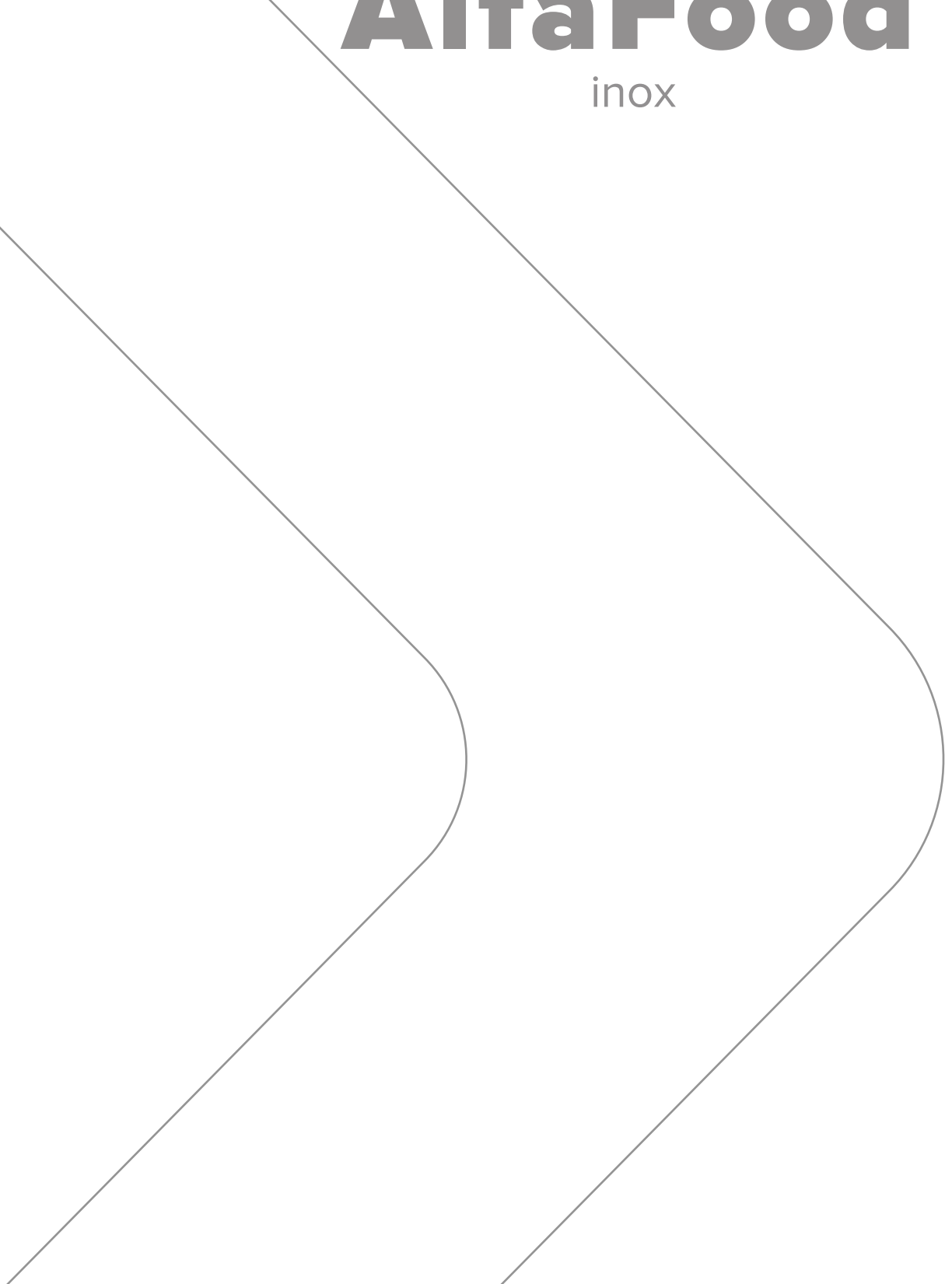
inox

АРМАТУРА  
ФИТИНГИ  
НЕРЖАВЕЮЩАЯ СТАЛЬ



**AlfaFood**

inox



# АРМАТУРА РЕЗЬБОВАЯ

THREADED FITTINGS

AISI 304/304L/316/316L



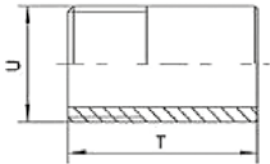
**AlfaFood**

inox

**Ниппель приварной (полусгон)**

Welding nipple | Ниппель прив. (полусгон) НР/СВ

01-01

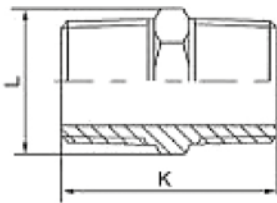


size	1/8"	1/4"	3/8"	1/2"	3/4"	1"	1 1/4"	1 1/2"	2"	2 1/2"	3"	4"
U	10.2	13.5	17.2	21.3	26.9	33.7	42.4	48.3	60.3	76.1	88.9	114.3
T	30	30	30	35	40	40	50	50	50	60	70	80

**Ниппель двухсторонний с гайкой**

Hexagon nipple | Ниппель двухсторонний с гайкой

01-03

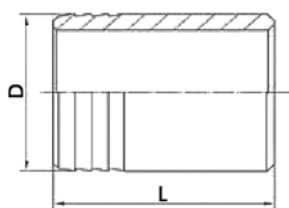


size	1/8"	1/4"	3/8"	1/2"	3/4"	1"	1 1/4"	1 1/2"	2"	2 1/2"	3"	4"
L	10.5	14.5	18	21.2	28	34	44	50	60.8	78	89	115
K	19	24	26	31.5	35.5	41	46.5	46.5	54	61	61	72

**Штуцер-ёлочка (ниппель) под сварку**

Nose nipple welded | Ниппель на рукав под сварку

01-05

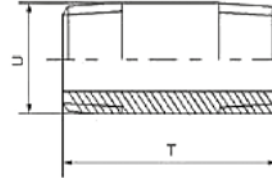


size	1/8"	1/4"	3/8"	1/2"	3/4"	1"	1 1/4"	1 1/2"	2"	2 1/2"	3"	4"
D		13.5	17.2	21.3	26.9	33.7	42.4	48.3	60.3			
L		70	70	70	70	70	70	100	100			

**Ниппель двухсторонний (сгон)**

Barrel nipple | Ниппель двухсторонний (сгон) НР/НР

01-02

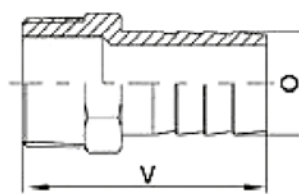


size	1/8"	1/4"	3/8"	1/2"	3/4"	1"	1 1/4"	1 1/2"	2"	2 1/2"	3"	4"
U	10.2	13.5	17.2	21.3	26.9	33.7	42.4	48.3	60.3	76.1	88.9	114.3
T	40	40	40	60	60	60	80	80	100	100	120	120

**Штуцер-ёлочка (ниппель) резьбовой с гайкой**

Hexagon hose nipple | Ниппель на рукав с гайкой

01-04

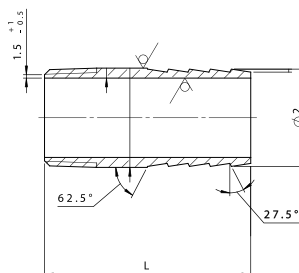


size	1/8"	1/4"	3/8"	1/2"	3/4"	1"	1 1/4"	1 1/2"	2"	2 1/2"	3"	4"
O	7	9	11	12.7	19	25.4	31.8	38.1	50.8	63.5	76.1	102
V	35	39	41	51	57	63	69	75.5	84	99	113	116

**Штуцер-ёлочка (ниппель) резьбовой**

Nose nipple threaded | Ниппель на рукав резьбовой

01-06

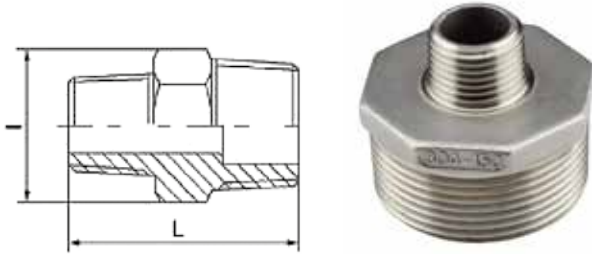


size	1/4"	3/8"	1/2"	3/4"	1"	1 1/4"	1 1/2"	2"	2 1/2"	3"	4"
L	70	70	70	70	70	70	100	100	120	120	120
Ø2	13	16.5	20.5	26	32.7	41.5	47.5	59.5	75	87.6	113

### Ниппель переходной

Hexagon reducing nipple | Ниппель перех. НР/НР

01-07

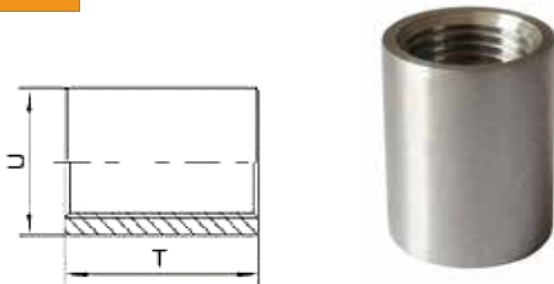


size	1/4*1/8"	3/8*1/4"	1/2*3/8"	3/4*1/2"	1*3/4"	1 1/4*1"	1 1/2*1 1/4"	2*1 1/2"	2 1/2*2"	3*2 1/2"	4*3"
L	21.5	25.5	29	34.5	39	44	46.5	51.5	58.5	61.5	67
I	14.5	18	22.5	28	35	44	49.5	61.5	78	89	115

### Муфта-бочонок

Coupling | Муфта-бочонок ВР

01-09

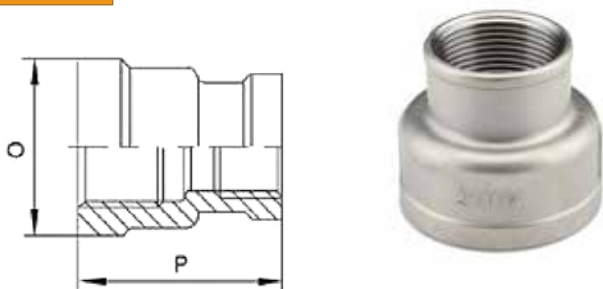


size	1/8"	1/4"	3/8"	1/2"	3/4"	1"	1 1/4"	1 1/2"	2"	2 1/2"	3"	4"
U	14	17.5	21.3	26.4	31.8	39.5	48.3	54.5	66.3	82	95	122
T	17	25	26	34	36	43	48	48	56	65	71	83

### Муфта переходная

Reducing coupling | Муфта переходная ВР/ВР

01-11

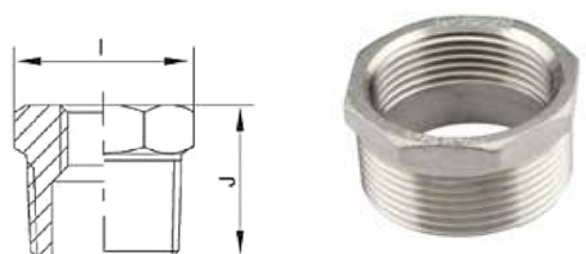


size	1/4*1/8"	3/8*1/4"	1/2*3/8"	3/4*1/2"	1*3/4"	1 1/4*1"	1 1/2*1 1/4"	2*1 1/2"	2 1/2*2"	3*2 1/2"	4*3"
P	20.5	23	27.5	32	38	42	45	47.5	55.5	60	69
O	17	19.5	24.5	30	37.5	46.5	53.5	65.5	81.5	96.5	122.5

### Футорка переходная ВР/НР

Hexagon bushing reducer | Переход резьбовой ВР/НР

01-08

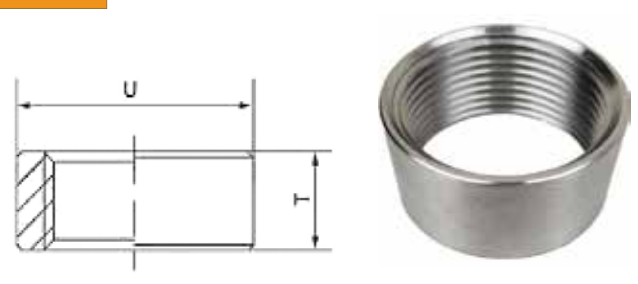


size	1/4"	3/8"	1/2"	3/4"	1"	1 1/4"	1 1/2"	2"	2 1/2"	3"	4"
J	14	15	18.5	21	23.5	26.5	26.5	31.5	34	37.5	40
I	14.5	18	22.5	28	35	44	49.5	61.5	78	89	115

### Полумуфта

Half-coupling | Полумуфта ВР

01-10

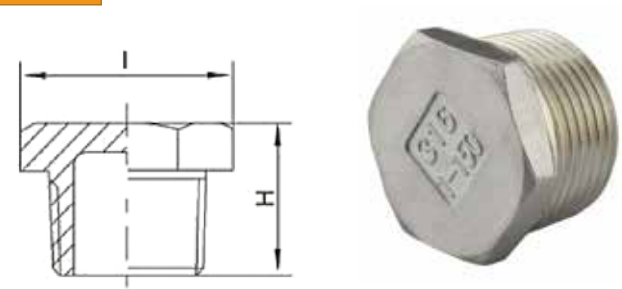


size	1/8"	1/4"	3/8"	1/2"	3/4"	1"	1 1/4"	1 1/2"	2"	2 1/2"	3"	4"
U	14	17.5	21.3	26.4	31.8	39.5	48.3	54.5	66.3	82	95	122
T	7.5	11	11.5	15	16.5	19	22	22	26	30	33	39

### Заглушка

Hexagon head plug | Заглушка с 6 - гранной головкой НР

01-12

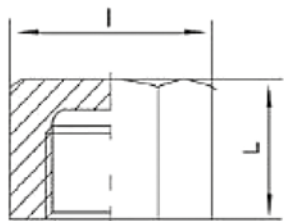


size	1/8"	1/4"	3/8"	1/2"	3/4"	1"	1 1/4"	1 1/2"	2"	2 1/2"	3"	4"
I	10.5	14.5	18	22.5	28	35	44	50	61.5	76.5	89	115
H	11.5	14	15	18.5	21	24	26.5	26.5	31.5	34	38	40

**Гайка-заглушка**

Hexagon cap | Гайка-заглушка ВР

01-13

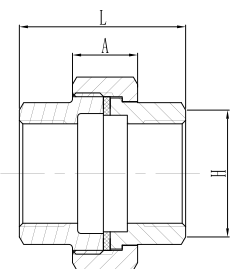


size	1/8"	1/4"	3/8"	1/2"	3/4"	1"	1 1/4"	1 1/2"	2"	2 1/2"	3"	4"
L	12.5	16	19.5	23.5	30	37	46	53	64	81	94	120
H	12	15	16	20	22	26	27	27	32	36	37	38

**Муфта-американка**

Flat union F/F | Соединение плоское (американка) ВР/ВР

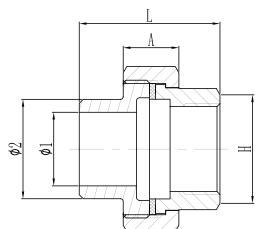
01-15



size	1/8"	1/4"	3/8"	1/2"	3/4"	1"	1 1/4"	1 1/2"	2"	2 1/2"	3"	4"
A	11	11	12	12	13	14.5	16	18	20	22	26	26
L	25	27	26	30	33	38	43	49	54	58	66	70
H	13.5	17	20	24	29.5	36.5	45.5	51	61	79	92.5	118.5

**Муфта-американка** | Flat union W/F | Соединение плоское (американка) СВ/ВР

01-17



size	1/8"	1/4"	3/8"	1/2"	3/4"	1"	1 1/4"	1 1/2"	2"	2 1/2"	3"	4"
A	11	11	12	12	13	14.5	16	18	20	22	26	26
L	24.5	30	31	34	36.5	42.5	47	52	57	60	70.5	78
Ø1	5	8	11.2	15.3	20	27.7	36.2	40	52	69	79	105.3
Ø2	10.2	13.4	17	21.1	26.6	33.5	42.4	48.3	60.5	76.6	89.6	114.3
H	13.5	17	20	24	29.5	36.5	45.5	51	64	79	92.5	118.5

**Гайка стопорная 6 - гранная**

Hexagon nut | Гайка 6 - гранная ВР (контргайка)

01-14

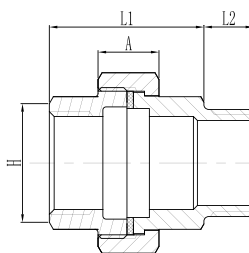


size	1/8"	1/4"	3/8"	1/2"	3/4"	1"	1 1/4"	1 1/2"	2"	2 1/2"	3"	4"
L	15	19	24	29.5	34	41	50	58.5	68	91	103	128
H	5	7	7	8.5	9	9	11	12	13	15	17	17

**Муфта-американка**

Flat union F/M | Соединение плоское (американка) ВР/НР

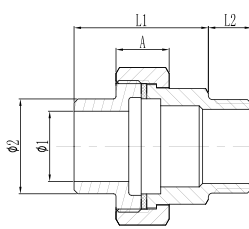
01-16



size	1/8"	1/4"	3/8"	1/2"	3/4"	1"	1 1/4"	1 1/2"	2"	2 1/2"	3"	4"
A	11	11	12	12	13	14.5	16	18	20	22	26	26
L1	25	27	26	30	33	38	43	49	54	58	66	70
L2	8	10.5	11.7	14.5	16.5	19	21.5	21.5	24	25	30.5	35
H	13.5	17	20	24	29.5	36.5	45.5	51	64	79	92.5	118.5

**Муфта-американка** | Flat union W/M | Соединение плоское (американка) СВ/НР

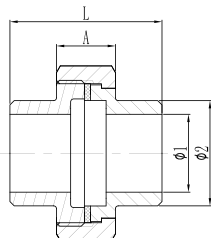
01-18



size	1/8"	1/4"	3/8"	1/2"	3/4"	1"	1 1/4"	1 1/2"	2"	2 1/2"	3"	4"
A	11	11	12	12	13	14.5	16	18	20	22	26	26
L1	24.5	30	31	34	36.5	42.5	47	52	57	60	70.5	78
L2	8	10.5	11.7	14.5	16.5	19	21.5	21.5	24	25	30.5	35
Ø1	5	8	11.2	15.3	20	27.7	36.2	40	52	69	79	105.3
Ø2	10.2	13.4	17	21.1	26.6	33.5	42.4	48.3	60.5	76.6	89.6	114.3

### Муфта-американка | Flat union W/W | Соединение плоское (американка) СВ/СВ

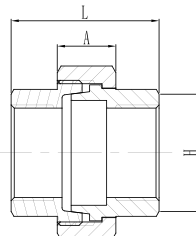
01-19



size	1/8"	1/4"	3/8"	1/2"	3/4"	1"	1 1/4"	1 1/2"	2"	2 1/2"	3"	4"
A	11	11	12	12	13	14.5	16	18	20	22	26	26
L	24	33	36	38	40	46.5	51	55	60	62	74.5	86
Ø1	5	8	11.2	15.3	20	27.7	36.2	40	52	69	79	105.3
Ø2	10.2	13.4	17	21.1	26.6	33.5	42.4	48.3	60.5	76.6	89.6	114.3

### Муфта-американка | Conical union F/F | Соединение конусное ВР/ВР

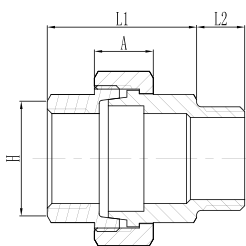
01-20



size	1/8"	1/4"	3/8"	1/2"	3/4"	1"	1 1/4"	1 1/2"	2"	2 1/2"	3"	4"
A	11	11	12	12	13	14.5	16	18	20	22	26	26
L	25	27	26	30	33	38	43	49	54	58	66	70
H	13.5	17	20	24	29.5	36.5	45.5	51	61	79	92.5	118.5

### Муфта-американка | Conical union F/M | Соединение конусное ВР/НР

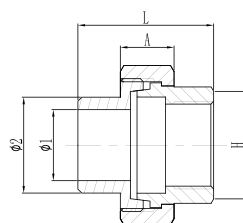
01-21



size	1/8"	1/4"	3/8"	1/2"	3/4"	1"	1 1/4"	1 1/2"	2"	2 1/2"	3"	4"
A	11	11	12	12	13	14.5	16	18	20	22	26	26
L1	25	27	26	30	33	38	43	49	54	58	66	70
L2	8	10.5	11.7	14.5	16.5	19	21.5	21.5	24	25	30.5	35
H	13.5	17	20	24	29.5	36.5	45.5	51	64	79	92.5	118.5

### Муфта-американка | Conical union W/F | Соединение конусное СВ/ВР

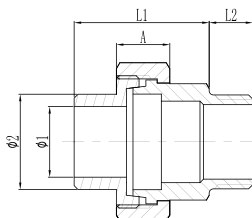
01-22



size	1/8"	1/4"	3/8"	1/2"	3/4"	1"	1 1/4"	1 1/2"	2"	2 1/2"	3"	4"
A	11	11	12	12	13	14.5	16	18	20	22	26	26
L	24.5	30	31	34	36.5	42.5	47	52	57	60	70.5	78
Ø1	5	8	11.2	15.3	20	27.7	36.2	40	52	69	79	105.3
Ø2	10.2	13.4	17	21.1	26.6	33.5	42.4	48.3	60.5	76.6	89.6	114.3
H	13.5	17	20	24	29.5	36.5	45.5	51	64	79	92.5	118.5

### Муфта-американка | Conical union W/M | Соединение конусное СВ/НР

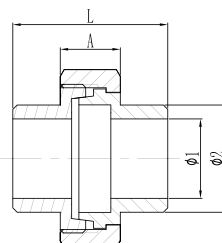
01-23



size	1/8"	1/4"	3/8"	1/2"	3/4"	1"	1 1/4"	1 1/2"	2"	2 1/2"	3"	4"
A	11	11	12	12	13	14.5	16	18	20	22	26	26
L1	24.5	30	31	34	36.5	42.5	47	52	57	60	70.5	78
L2	8	10.5	11.7	14.5	16.5	19	21.5	21.5	24	25	30.5	35
Ø1	5	8	11.2	15.3	20	27.7	36.2	40	52	69	79	105.3
Ø2	10.2	13.4	17	21.1	26.6	33.5	42.4	48.3	60.5	76.6	89.6	114.3

### Муфта-американка | Conical union W/W | Соединение конусное СВ/СВ

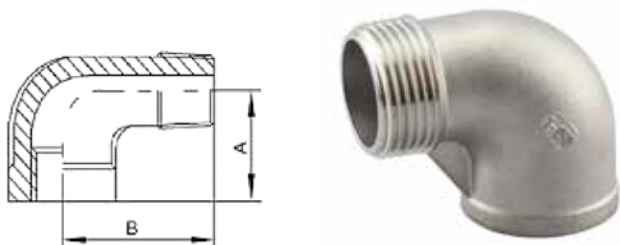
01-24



size	1/8"	1/4"	3/8"	1/2"	3/4"	1"	1 1/4"	1 1/2"	2"	2 1/2"	3"	4"
A	11	11	12	12	13	14.5	16	18	20	22	26	26
L	24	33	36	38	40	46.5	51	55	60	62	74.5	86
Ø1	5	8	11.2	15.3	20	27.7	36.2	40	52	69	79	105.3
Ø2	10.2	13.4	17	21.1	26.6	33.5	42.4	48.3	60.5	76.6	89.6	114.3

**Отвод резьбовой**  
Street elbow F/M | Отвод ВР/НР

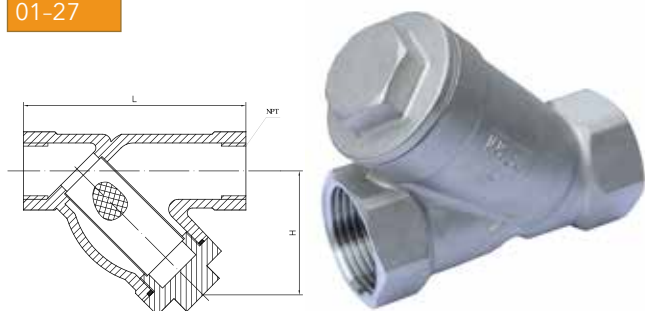
01-25



size	1/8"	1/4"	3/8"	1/2"	3/4"	1"	1 1/4"	1 1/2"	2"	2 1/2"	3"	4"
A	15	17	21	25	30	34	40.5	44	51	67	80	97
B	23	25	27	33	38	45	52.5	56	65	83	105	125

**Фильтр сетчатый резьбовой**  
Y-strainer | Фильтр сетчатый ВР/ВР

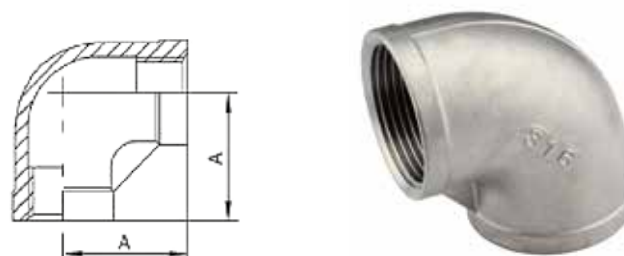
01-27



size	1/2"	3/4"	1"	1 1/4"	1 1/2"	2"
L	59	74	83	99	108	128
H	46	55	66	71	80	96

**Отвод резьбовой**  
Threaded elbow F/F | Отвод ВР/ВР

01-26



size	1/8"	1/4"	3/8"	1/2"	3/4"	1"	1 1/4"	1 1/2"	2"	2 1/2"	3"	4"
A	15	17	21	24	31.5	36	38	42	54	67	79	94

**Тройник резьбовой**  
Tee threaded | Тройник ВР-ВР-ВР

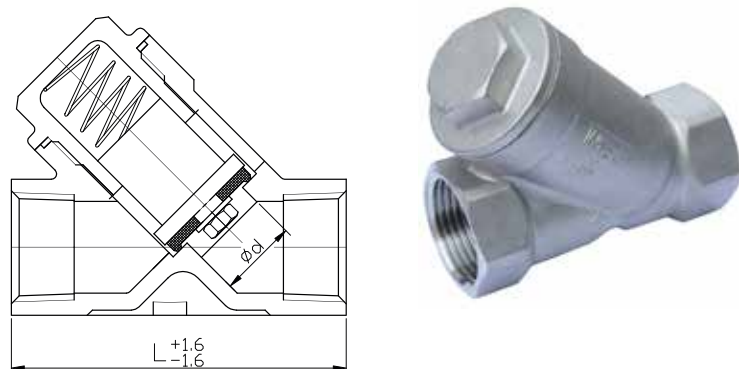
01-28



size	1/8"	1/4"	3/8"	1/2"	3/4"	1"	1 1/4"	1 1/2"	2"	2 1/2"	3"	4"
A	15	17	21	25	31	36	38	42	54	66	76	94

**Клапан обратный резьбовой** | Y-type piston check valve | Клапан обратный резьбовой угловой ВР-ВР

01-29

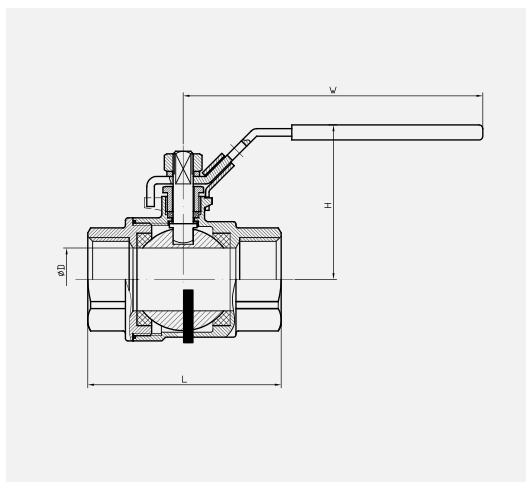


size	DN	d	L
1/4"	10	11	64
3/8"	12	12	64
1/2"	15	15	64
3/4"	20	20	79
1"	25	25	88
1 1/4"	32	32	104
1 1/2"	38	38	118
2"	48	48	133
2 1/2"	65	64	190



Кран шаровой резьбовой | 2pc ball valve F/F | Кран шаровой 2-составной ВР/ВР

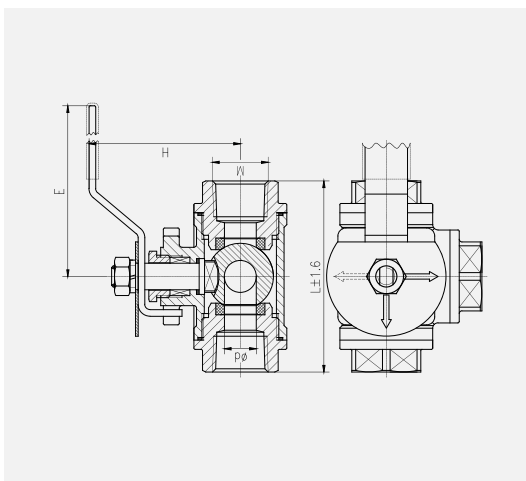
01-30



size	D	L	H	W
1/4"	11.6	48.5	48	91
3/8"	12.5	48.5	48	91
1/2"	15	56.5	52	102
3/4"	20	65	56	125
1"	25	77	60	125
1-1/4"	32	87	74	140
1-1/2"	38	98	78	140
2"	50	119	92	162
2-1/2"	64	144.5	117	230
3"	76	166	126	230
4"	96	219	173	320

Кран шаровой 3-ходовой (Тип T/L) | 3-way ball valve T-type | Кран шаровой 3-ходовой Тип Т ВР-ВР-ВР

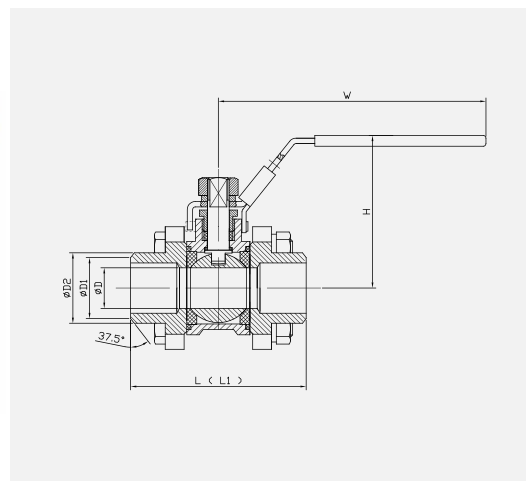
01-31



size	d	H	E	L
1/2"	12	52	100	70
3/4"	15	62	120	79
1"	18	67	125	88
1 1/4"	25	85	140	115
1 1/2"	32	95	180	130
2"	38	100	180	150

Кран шаровой под сварку | 3pc ball valve W/W | Кран шаровой 3-составной СВ/СВ

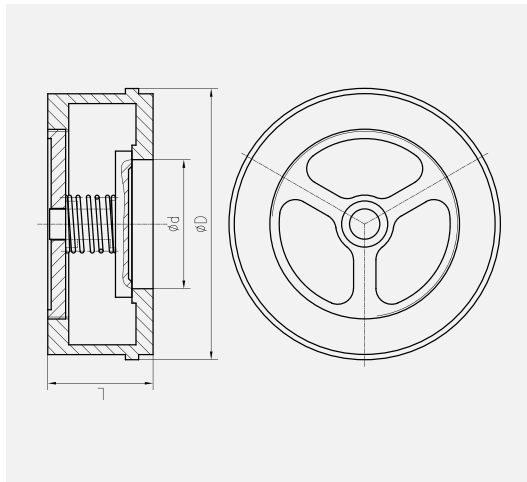
01-37



size	D	L	H	W	D2	D1	L1
1/4"	11.6	59	47.5	92.5	15.5	13.3	225
3/8"	12.5	59	47.5	92.5	17.5	14.5	225
1/2"	15	60	53	106.5	22	17	225
3/4"	20	70	58.5	112.5	27.3	22.5	22
1"	25	80	62.5	126.5	34	28.6	245
1-1/4"	32	96	78.5	155.5	42.7	36	256
1-1/2"	38	108	83	155.5	48.7	43	260
2"	50	122	99	191.5	61	54	275
2-1/2"	64	158	129.5	247	76.5	68	334
3"	76	175	138.5	247	90	84	345
4"	96	218	176	320	115	104	365

### Клапан обратный межфланцевый | Wafer disc check valve | Обратный клапан (пепельница)

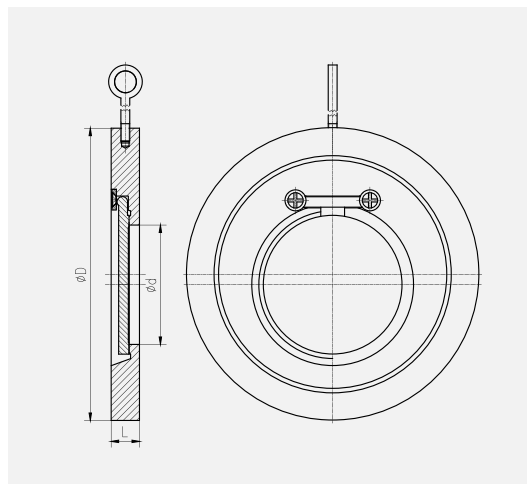
01-33



size	d	D	L
1/2"	15	48	25
3/4"	20	58	28
1"	25	68.5	28
1 1/4"	32	79	30
1 1/2"	39	87	35
2"	49	103	40
2 1/2"	60	124	49
3"	70	138	57
4"	91	161	68
5"	117	185	78
6"	137	207	95
8"	190	272	110

### Клапан обратный межфланцевый | Check valve (swing) | Обратный клапан (хлопушка)

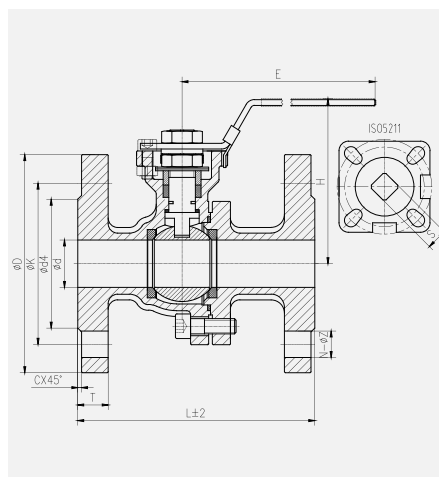
01-34



size	d	D	L
DN50	25	104	15
DN65	38	125	15
DN80	46	140	16
DN100	71.5	160	16
DN125	95	185	17
DN150	114	220	19
DN200	140	270	26
DN250	188	331	29
DN300	216	386	38
DN350	263	446	38

### Кран шаровой 2х-составной фланцевый | 2pc flanged ball valve | Кран шаровой фланцевый 2 - составный

01-36



size	1/2"	3/4"	1"	1 1/4"	1 1/2"	2"	2 1/2"	3"	4"	5"	6"
d	15	20	25	32	38	50	65	80	100	125	150
d4	41	54	64	74	81	96	117	130	151	181	205
K	65	75	85	100	110	125	145	160	180	210	240
D	95	105	115	140	140	165	185	200	220	250	285
N-Z	4-14	4-14	4-14	4-18	4-18	4-18	4-18	8-18	8-18	8-18	8-22
C	2	2	2	2	3	3	3	3	3	3	3
T	14	16	16	16	16	18	18	20	20	22	22
L	115	120	125	130	140	150	170	180	190	325	350
ISO 5211	F03	F03	F04	F04	F05	F05	F07	F07	F07	F10	F10
S	F04	F04	F05	F05	F07	F07	F10	F10	F10	F12	F12
H	9	9	11	11	14	14	17	17	19	27	27
E	75	80	90	100	120	130	150	160	185	242	270
E	125	125	155	155	185	185	260	260	300	500	600

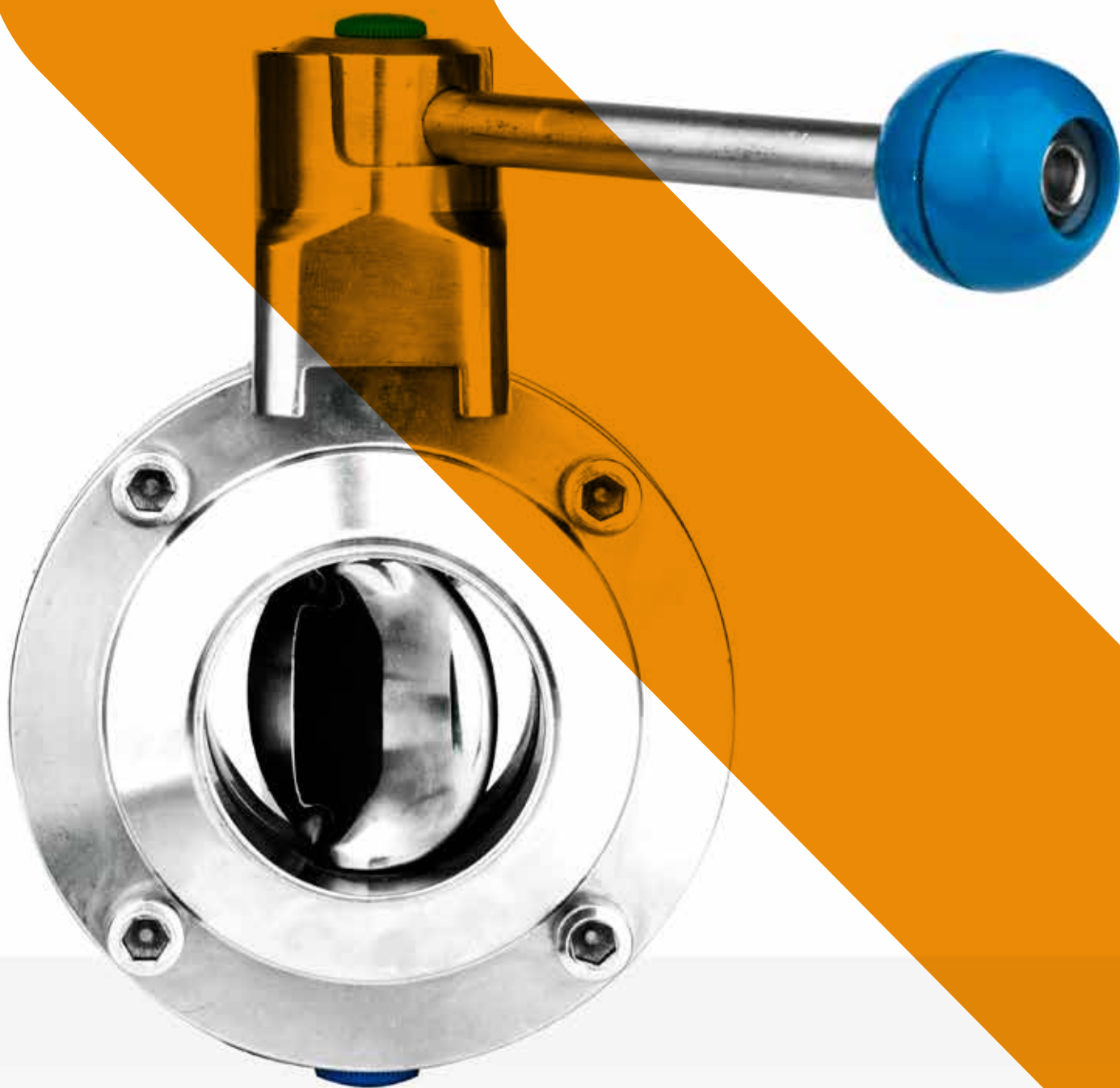
# АРМАТУРА ПИЩЕВАЯ

FITTINGS FOR THE FOOD INDUSTRY |  
АРМАТУРА ДЛЯ ПИЩЕВОЙ ПРОМЫШЛЕННОСТИ

AISI 304/304L/316/316L

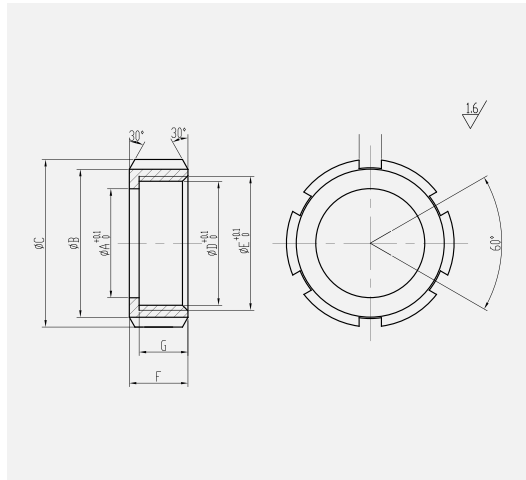


**AlfaFood**



## Гайка шлицевая DIN | DIN nut | Гайка соединения DIN

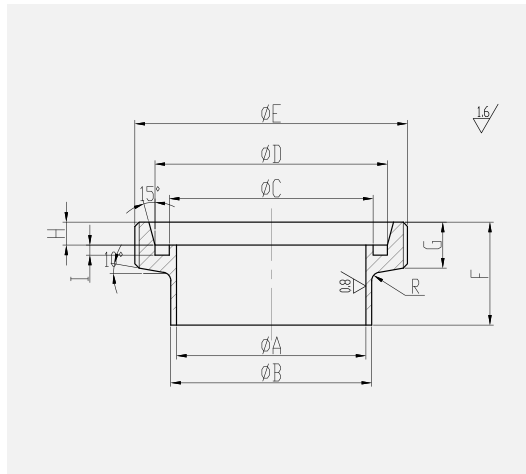
02-01A



size	A	B	C	D	E	F	G	I
10	19	33	38	25.7	RD28x1/8"	18	15	4-6x3
15	25	38	44	31.7	RD34x1/8"	18	15	4-7x3
20	31	48	54	40.9	RD44x1/6"	20	17	4-7x3
25	36	56	63	48.65	RD52x1/6"	21	18	4-8x3.5
32	42	61	70	54.65	RD58x1/6"	21	18	4-8x3.5
35	46	69	75	58.2	RD62x1/6"	21	18	4-10x4
40	49	70	78	61.65	RD65x1/6"	21	18	4-10x4
50	62	84	92	74.65	RD78x1/6"	22	19	4-10x4
65	80	102	112	91.65	RD95x1/6"	25	21	6-10x5
80	94	117	127	105.2	RD110x1/4"	29	25	6-10x5
100	115	138	148	125.2	RD130x1/4"	31	26	6-12x5
125	138	166	178	155.2	RD160x1/4"	35	30	6-12x5
150	164	198	210	185.2	RD190x1/4"	40	34	6-12x6

## Штуцер резьбовой DIN | DIN male part | Штуцер соединения резьбовой DIN

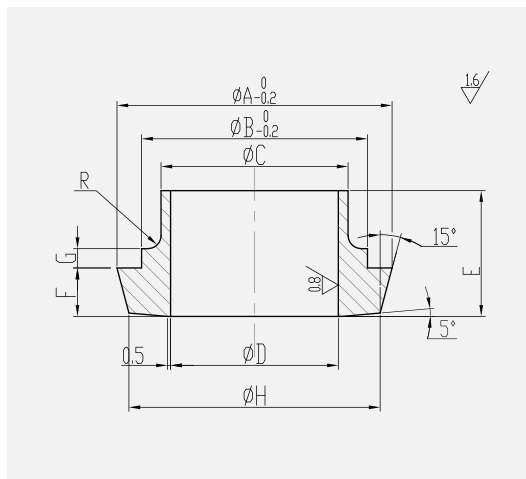
02-01B



size	A	B	C	D	ETPI	E	F	G	H	I	R
10	12	9	12	19.8	RD28x1/8"	21	12	4	3.0	1.6	
15	18	15	18	25.8	RD34x1/8"	21	12	4	3.0	1.6	
20	22	19	23	32.8	RD44x1/6"	51.4	24	14	6	3.0	1.6
25	28	25	30	40	RD52x1/6"	51.4	29	14	7	3.5	2.5
32	34	31	36	46	RD58x1/6"	57.4	32	14	7	3.5	2.5
35	37	34	38	47.8	RD62x1/6"	61.6	33	14	7	3.5	2.5
40	40	37	42	52	RD65x1/6"	64.4	33	14	7	3.5	2.5
50	52	49	54	64	RD78x1/6"	77.4	35	14	7	3.5	2.5
65	66	70	71	81	RD95x1/6"	94.4	40	16	8	3.5	4.0
80	81	85	85	95	RD110x1/4"	109.4	45	20	8	3.5	4.0
100	100	104	104	114	RD130x1/4"	129.4	54	20	10	1.0	4.0
125	125	129	130	141.8	RD160x1/4"	159.4	46	24	12	4.5	4.0
150	150	154	155	166.8	RD190x1/4"	189.4	50	28	13	4.5	4.0
SMS5"	123	127	130	141.8	RD160x1/4"	159.4	46	24	12	4.5	4.0

## Штуцер конический DIN | DIN liner part | Штуцер соединения конический DIN

02-01C



size	A	B	C	D	E	F	G	R	H
10	22	18	12	9	17	6	3	1	19.48
15	28	24	18	15	17	6	3	1	25.48
20	36	30	22	19	18	8	3	1	32.48
25	44	35	28	25	22	10	3	2.5	38.92
32	50	41	34	31	25	10	3	2.5	44.92
35	52	45	37	34	26	10	3	2.5	46.9
40	56	48	40	37	26	10	3	2.5	50.92
50	68.5	61	52	49	28	11	3	2.5	62.88
65	86	79	70	66	32	12	4	4.0	79.87
80	100	93	85	81	37	12	4	4.0	93.85
100	121	114	104	100	44	15	5	4.0	113.25
125	150	137	129	125	34	17	5	2.5	141.25
150	176	163	154	150	37	18	6	2.5	166.72
SMS5"	150	137	127	123	34	17	5	2.5	141.29

# АРМАТУРА ПИЩЕВАЯ

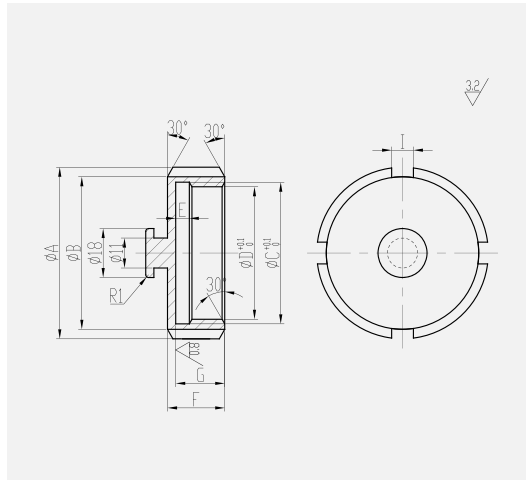
FITTINGS FOR THE FOOD INDUSTRY | АРМАТУРА ДЛЯ ПИЩЕВОЙ ПРОМЫШЛЕННОСТИ



**AlfaFood**  
inox

## Гайка-заглушка DIN | DIN blind nut | Гайка-заглушка DIN

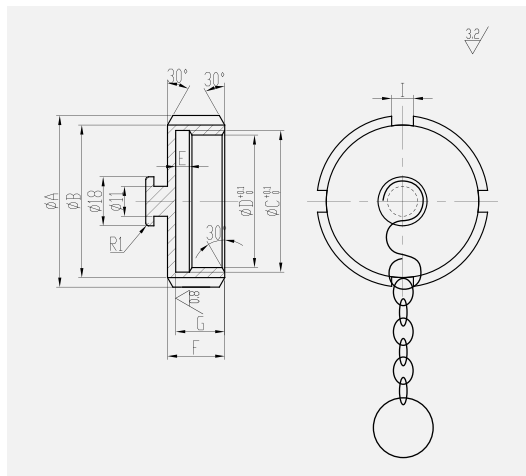
02-01D



size	A	B	C	D	E	F	G	I
10	38	33	RD28x1/8"	25.7	4	18	15	4-6x3
15	44	38	RD34x1/8"	31.7	4	18	15	4-7x3
20	54	48	RD44x1/8"	40.9	5	20	17	4-7x3
25	63	56	RD52x1/8" (Ø51.4)	48.65	5	21	18	4-8x3.5
32	70	63	RD58x1/8" (Ø57.4)	54.65	5	21	18	4-8x3.5
40	78	70	RD65x1/8" (Ø64.4)	61.65	5	21	18	4-10x4
50	92	84	RD78x1/8" (Ø77.4)	74.65	5	22	19	4-10x4
65	112	102	RD95x1/8" (Ø94.4)	91.65	5	25	21	6-10x5
80	127	117	RD110x1/4" (Ø109.4)	105.2	5	29	25	6-10x5
100	148	138	RD130x1/4" (Ø129.4)	125.2	5	31	26	6-12x6

## Гайка-заглушка с цепочкой | DIN blind nut with chain | Гайка заглушка с цепочкой DIN

02-01E

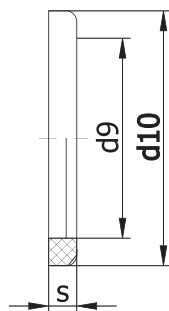


size	A	B	C	D	E	F	G	I
10	38	33	RD28x1/8"	25.7	4	18	15	4-6x3
15	44	38	RD34x1/8"	31.7	4	18	15	4-7x3
20	54	48	RD44x1/8"	40.9	5	20	17	4-7x3
25	63	56	RD52x1/8" (Ø51.4)	48.65	5	21	18	4-8x3.5
32	70	63	RD58x1/8" (Ø57.4)	54.65	5	21	18	4-8x3.5
40	78	70	RD65x1/8" (Ø64.4)	61.65	5	21	18	4-10x4
50	92	84	RD78x1/8" (Ø77.4)	74.65	5	22	19	4-10x4
65	112	102	RD95x1/8" (Ø94.4)	91.65	5	25	21	6-10x5
80	127	117	RD110x1/4" (Ø109.4)	105.2	5	29	25	6-10x5
100	148	138	RD130x1/4" (Ø129.4)	125.2	5	31	26	6-12x6

## Уплотнение соединения DIN | Gasket DIN | Уплотнение соединения DIN

02-01F

NBR, EPDM, Silicon, Teflon, Viton

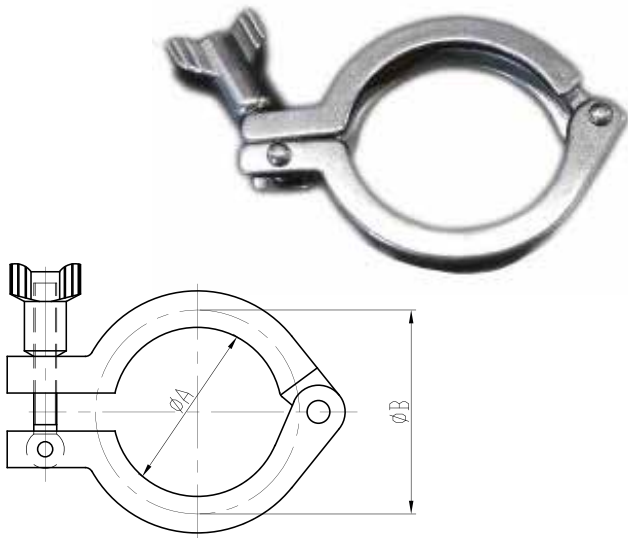


DN	d9	d10	s	Weight [kg]
10	12	20	4,5	0,01
15	18	26	4,5	0,02
20	23	33	4,5	0,03
25	30	40	5/8	0,03
32	36	46	5/8	0,04
40	42	52	5/8	0,05
50	54	64	5/8	0,06
65	71	81	5/8	0,07
75/3"	78	88	5/8	0,09
80	85	95	5/8	0,09
100	104	114	6/8	0,013
125	130	142	7/8	0,022
150	155	162	7/8	0,027

## Обойма соединения кламп ТС

TC clamp | Обойма соединения ТС

02-02A



size	1/2"-3/4"	A37	1"-1 1/2"	2.0"	2 1/2"	3.0"	3 1/2"	4.0"	4 1/2"	6.0"	8.0"
A	20	27.8	44.4	57.8	71.4	84	99	110	123	155.4	205
B	28	37	53.6	67	80.6	94.2	109.2	122.2	133.2	170.4	220

## Заглушка клампа ТС

TC blind ferrule | Заглушка соединения ТС

02-02C

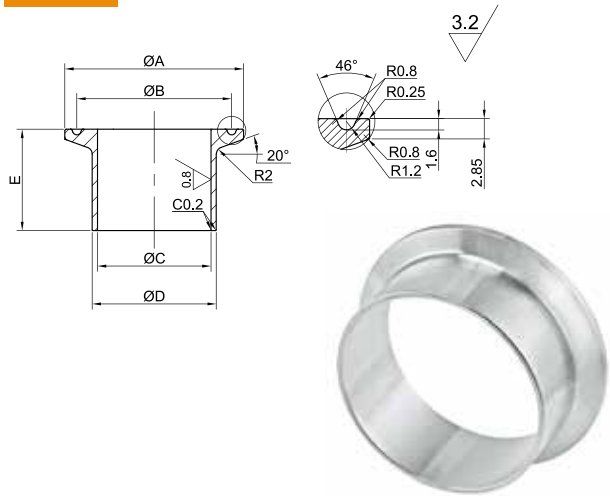


size	1"	1.5"	2"	2.5"	3"	4"	6"
A	50.5	50.5	64	77.5	91	119	166.8
B	6.3	6.3	6.3	6.3	6.3	7.9	11.1
C	43.5	43.5	56.5	70.5	83.5	110	156.4
D	2.85	2.85	2.85	2.85	2.85	2.85	5.6

## Штуцер приварной соединения кламп ТС

TC ferrule | Штуцер соединения ТС

02-02B

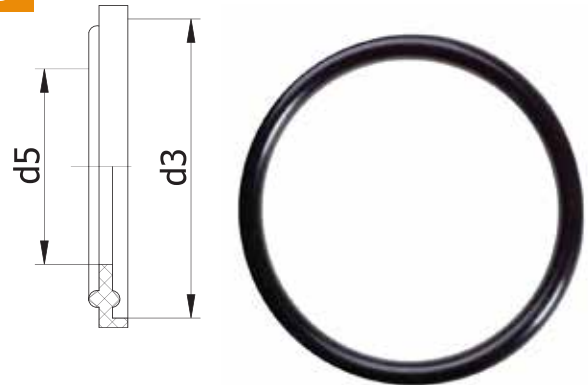


size	DIN10	DIN15	DIN20	DIN25	DIN32	DIN40	DIN50	DIN65	DIN80	DIN100
A	34.0	34.0	34.0	50.5	50.5	50.5	64.0	91.0	106.0	119.0
B	27.0	27.0	27.0	43.5	43.5	43.5	56.5	83.5	97.0	110.0
C	10.0	16.0	20.0	26.0	32.0	38.0	50.0	66.0	81.0	100.0
D	13.0	19.0	23.0	29.0	35.0	41.0	53.0	70.0	85.0	104.0
E	18.0	18.0	18.0	21.5	21.5	21.5	21.5	21.5	21.5	21.5

## Уплотнение ТС

Gasket TC | Уплотнение соединения Клампа NBR, EPDM, Silicon

02-02D



DN	d3	d5	Weight [kg]
10	34	10,2	0,002
15	34	16,2	0,003
20	34	20,2	0,004
25	50,5	26,2	0,005
32	50,5	32,2	0,005
40	50,5	38,2	0,006
50	64	50,2	0,007
65	91	66,2	0,013
80	106	81,2	0,014
100	119	100,2	0,015
125	155	125,2	0,024
150	183	150,2	0,031
200	233,5	200,2	0,059

# АРМАТУРА ПИЩЕВАЯ

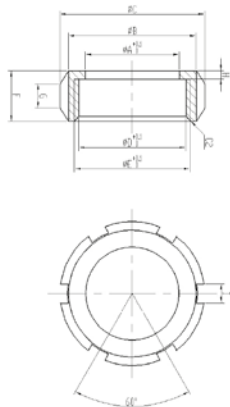
FITTINGS FOR THE FOOD INDUSTRY | АРМАТУРА ДЛЯ ПИЩЕВОЙ ПРОМЫШЛЕННОСТИ



## Гайка шлицевая SMS

Nut SMS | Гайка соединения SMS

02-03A

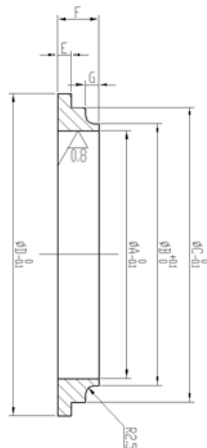


size	¾"	1"	1.25"	1.5"	2"	2.5"	3"	4"
A	26	31	39	50.5	60.5	74	87	113
B	39	45	53	66	76	90	104	130
C	45	51	60	72	82	89	114	140
D	31.1	36.4	44.4	56.4	66.1	81.4	94.4	121.1
E	RD34x1/8"	RD40x1/6"	RD48x1/6"	RD60x1/6"	RD70x1/6"	RD85x1/6"	RD98x1/6"	RD125x1/6"
F	18	20	21	22	22	26	28	29
G	14.5	9	10	10	10	12	14	13
H	3.5	3.5	3.5	4	1	4	4	1
I	6-6x3	6-6x3	6-6x3	6-6x3	6-6x3	6-6x3	6-10x3	6-10x3

## Штуцер конический SMS

Flat liner SMS | Штуцер соединения конический SMS

02-03C

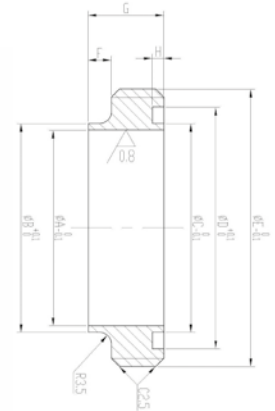


size	¾"	1"	1.25"	1.5"	2"	2.5"	3"	4"
A	16	22.1	29	35.1	47.8	59.5	72.2	97.6
B	19	25.1	32	38.1	50.8	63.5	76.2	101.6
C	25	30	38	49.5	59.5	73	86	112
D	30.5	36	44	56	66	81	94	121
E	3.5	3.5	3.5	4	4	4	4	4
F	11	11	11	12	12	12	12	12
G	4	1	4	4	4	1	4	4

## Штуцер резьбовой SMS | Welding male part

SMS | Штуцер соединения резьбовой SMS

02-03B

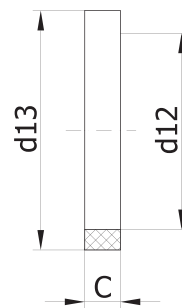


size	¾"	1"	1.25"	1.5"	2"	2.5"	3"	4"
A	16	22.4	29	35.1	47.8	59.5	72.2	97.6
B	19	25.4	32	38.1	50.8	63.5	76.2	101.6
C	19	25	32	38	51	63.5	76	101.6
D	26	32	40	48	61	73.5	86	114
E	RD33.6x1/8"	RD39.4x1/6"	RD47.2x1/6"	RD59.4x1/6"	RD69.4x1/6"	RD84.4x1/6"	RD97.4x1/6"	RD124.4x1/6"
F	5	7	7	7	7	7	7	7
G	15	18	20	20	20	23	25	25
H	3	3.5	3.5	3.5	3.5	3.5	3.5	3.5

## Уплотнение соединения SMS | Gasket SMS |

Уплотнение соединения SMS

02-03D



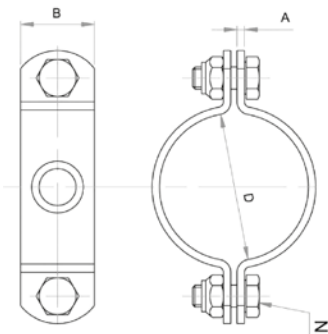
NBR, EPDM, Silicon

DN	c	d12	d13	Weight [kg]
25	5,5	25	32	0,002
38	5,5	38	48	0,003
51	5,5	51	61	0,006
63,5	5,5	63,5	73,5	0,007
76	5,5	76	86	0,01
101,6	5,5	101,6	113,5	0,02

**КТР (хомут)**

Pipe clamp | Обойма (хомут)

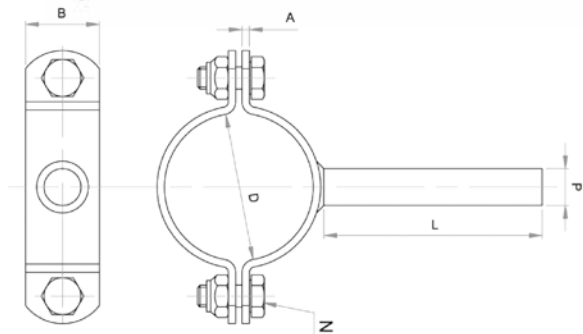
02-04



**КТР (хомут) с ножкой**

Pipe clamp with bar | Обойма (хомут) с ножкой

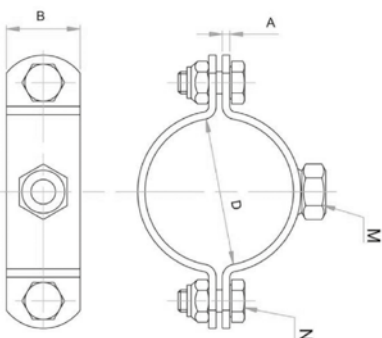
02-05



**КТР (хомут) с гайкой**

Pipe clamp with nut | Обойма (хомут) с гайкой

02-06



**КТР (хомут) с уплотнением** | Pipe clamp with rubber insert | Обойма (хомут) с резинкой

02-07





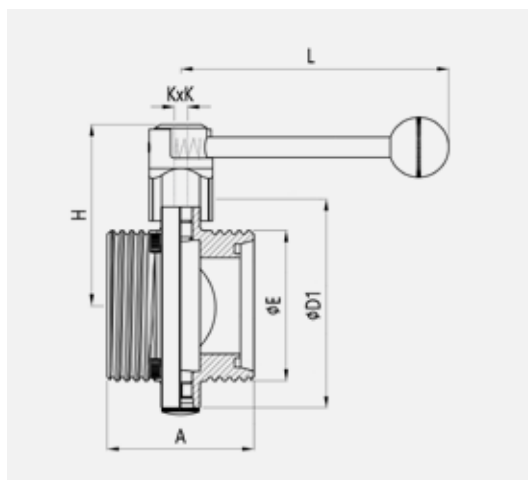
# АРМАТУРА ПИЩЕВАЯ

FITTINGS FOR THE FOOD INDUSTRY | АРМАТУРА ДЛЯ ПИЩЕВОЙ ПРОМЫШЛЕННОСТИ



## Затвор дисковый резьбовой | Butterfly valve threaded | Затвор дисковый DIN (резьба/резьба)

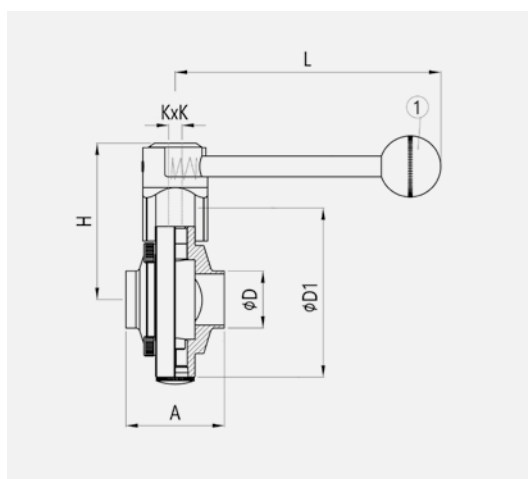
02-08



DN	DIMENSIONS							Weight [kg/pcs]
	H	D	E	KxK	A	D1	L	
25	79.5	28	RD52x1/8"	8x8	58	78	137.5	1.17
32	83.5	34	RD58x1/8"	8x8	58	86	137.5	1.35
40	85	40	RD65x1/8"	8x8	60	95	137.5	1.48
50	93	52	RD78x1/8"	8x8	64	108	137.5	1.94
65	102	70	RD95x1/8"	8x8	68	125	137.5	2.87
80	114	85	RD110x1/8"	10x10	71	140	185	3.11
100	124	104	RD130x1/8"	10x10	84	160	185	4.60

## Затвор дисковый под сварку | Butterfly valve welded | Затвор дисковый DIN (сварка/сварка)

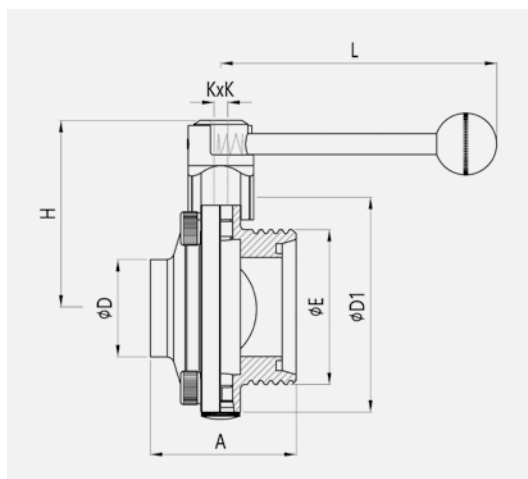
02-09



DN	DIMENSIONS							Weight [kg/pcs]
	H	D	KxK	A	D1	L		
25	79.5	28	8x8	50	78	137.5	1.02	
32	83.5	34	8x8	50	86	137.5	1.26	
40	85	40	8x8	50	95	137.5	1.29	
50	93	52	8x8	52	108	137.5	1.66	
65	102	70	8x8	56	125	137.5	2.77	
80	114	85	10x10	58	140	185	2.68	
100	124	104	10x10	64	160	185	4.12	

## Затвор дисковый резьба-сварка | Butterfly valve welded/threaded | Затвор дисковый DIN (резьба/сварка)

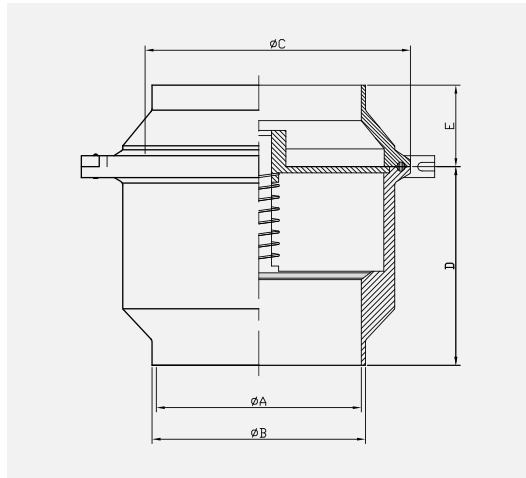
02-10



DN	DIMENSIONS							Weight [kg/pcs]
	H	E	KxK	A	D1	L		
25	79.5	RD52x1/8"	8x8	66	78	137.5	1.32	
32	83.5	RD58x1/8"	8x8	66	86	137.5	1.45	
40	85	RD65x1/8"	8x8	70	95	137.5	1.66	
50	93	RD78x1/8"	8x8	76	108	137.5	2.23	
65	102	RD95x1/8"	8x8	80	125	137.5	2.97	
80	114	RD110x1/8"	10x10	84	140	185	3.54	
100	124	RD130x1/8"	10x10	104	160	185	5.09	

**Клапан обратный DIN** | Non return valve DIN weld/weld | Обратный клапан DIN (сварка/ сварка)

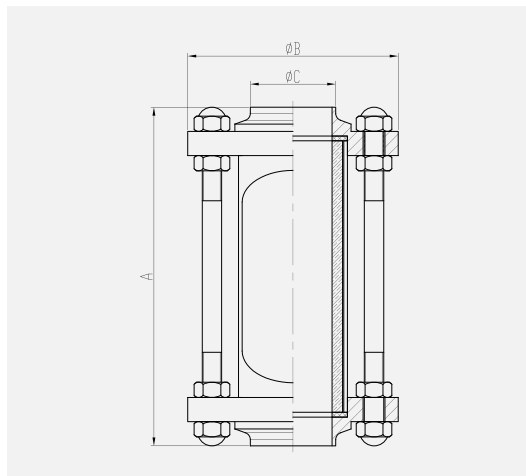
02-11



size	A	B	C	H
DN15	25	18	64	76.5
DN20	25	22	64	76.5
DN25	25	28	64	97
DN32	31	34	77.5	97
DN40	37	40	77.5	97
DN50	49	52	91	97
DN65	66	70	106	93.5
DN80	81	85	119	114
DN100	100	104	148	107

**Диоптр трубный** | Sight glass welded end | Диоптр трубный (сварка -сварка)

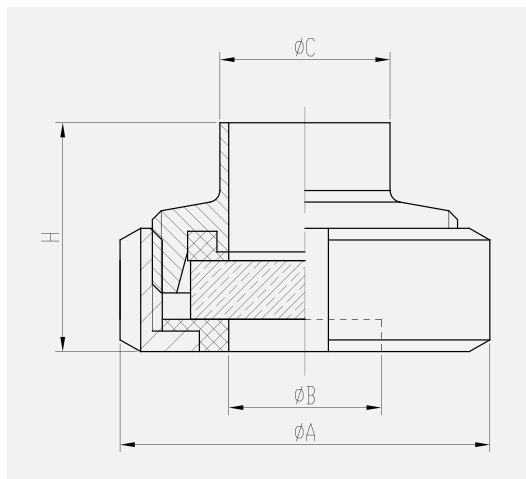
02-12



size	A	B	C
DN25	140	79	28.0
DN32	140	79	34.0
DN40	140	87	40.0
DN50	142	106	52.0
DN65	144	124	70.0
DN80	148	139	85.0
DN100	152	159	104.0

**Диоптр гаечный** | Union type sight glass | Диоптр плоский

02-13



size	A	B	C	H
DN25	63	26	28	39
DN32	70	32	34	42
DN40	78	39	40	44
DN50	92	42	52	46
DN65	112	70	70	51
DN80	127	84	85	56
DN100	148	104	104	65

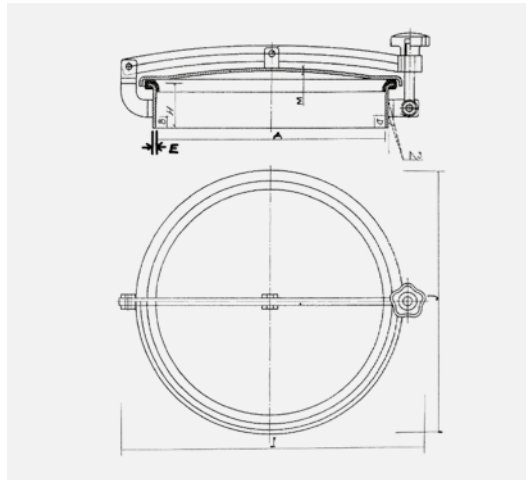
# АРМАТУРА ПИЩЕВАЯ

FITTINGS FOR THE FOOD INDUSTRY | АРМАТУРА ДЛЯ ПИЩЕВОЙ ПРОМЫШЛЕННОСТИ



## Люк | Manhole EPDM 304 | Люк

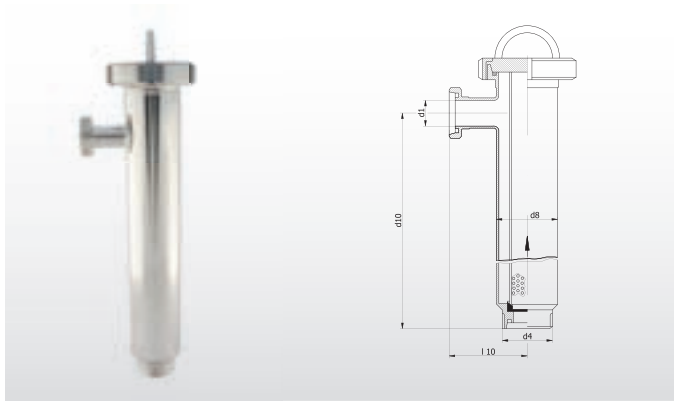
02-14



size	A	B	C	D	E	M	H	I	J
DN150	150	60	190	60	2.5 ±0.25	2 ±0.25	70	275	190
DN200	200	60	190	60	2.5 ±0.25	2 ±0.25	70	325	240
DN250	250	60	190	60	2.5 ±0.25	2 ±0.25	70	375	290
DN300	300	60	190	60	2.5 ±0.25	2 ±0.25	70	425	340
DN350	350	60	190	60	3 ±0.25	2 ±0.25	70	475	390
DN400	400	60	190	60	3 ±0.25	2 ±0.25	70	525	440
DN430	425	60	190	60	3 ±0.25	2 ±0.25	70	571	470
DN450	450	60	190	60	3 ±0.25	2 ±0.25	70	576	490
DN500	500	60	190	60	3 ±0.25	2 ±0.25	70	626	540
DN600	600	60	190	60	3 ±0.25	2 ±0.25	70	726	640

## Фильтр молочный | Angular filter DIN | Фильтр угловой молочный

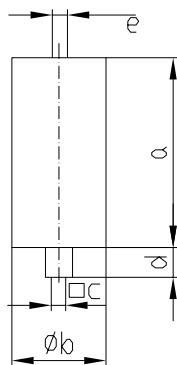
02-15



DN	d1	d4	d8	d10	l10	Weight [kg]
25	26	52x1/6"	70	327	90	3,30
32	32	58x1/6"	70	327	90	3,40
40	38	65x1/6"	104	340	115	6,19
50	50	78x1/6"	104	340	115	6,20
65	66	95x1/6"	104	325	115	6,50
80	81	110x1/4"	129	560	160	11,80
100	100	130x1/4"	154	560	160	16,28
125	125	160x1/4"	180	560	200	21,45
150	150	190x1/4"	206	620	240	-

## Пневмопривод | Pneumatic actuator | Пневмопривод (пружина-воздух)

02-16



DN	a	b	c	d	e	Weight [kg]
15-100/1"-4"	149	85	9,5	24	G1/8"	2,7
125-200	204	114	14	31	G1/8"	6,4
15-50/1"-2"	149	70	9,5	24	G1/8"	1,9

	EN	AISI	PN	GOST	DIN	
NIERDZEWNE KWASOODPORNE   ACID-RESISTANT STAINLESS STEEL   КИСЛОТОСТОЙКАЯ НЕРЖАВЕЮЩАЯ СТАЛЬ	FERRYTYCZNE FERRITIC ФЕРРИТНЫЕ	1.4000	403, 410S	0H13	08Ch13	X6Cr13
		1.4003				X2CrNi12
		1.4016	430	H17	12cH17	X6Cr17
		1.4510	430Ti, 439	0H17T	08Ch17T	X30Ti17, X6Cr5Ti17
		1.4509	441			X2CrTiNb18
	MARTENZYTYCZNE MARTENSITIC МАРТЕНЗИТНЫЕ	1.4006	410	1H13	12Ch13, 15Ch13L	X12Cr13, X10Cr13
		1.4021	420	2H13	20Ch13	X20Cr13
		1.4028	420F	3H13	30Ch13	X30Cr13
		1.4031		4H13	40Ch13	X38Cr13, X39Cr13
		1.4034		4H13	40Ch13	X46Cr13
		1.4057	431	4H17N, 22H17N2	20Ch17N2	X17Cr Ni16-2
		1.4122		3H17		X35CrMo17
	AUSTENITYCZNE   AUSTENITIC   АУСТЕНИТНЫЕ	1.4301	304	0H18N9	08CH18N10	X5CRNI18-10
		1.4305	303			X8CRNI18-9
		1.4306	304L	00H18N10	03CH18N11	X2CrNi19-11
		1.4307	(304L)			
		1.4310	301	1H18N9		X10CrNi18-8
		1.4401	316	0H17N12M2T		X5CrNiMo17-12-2
		1.4404	316L	00H17N14M2		X2CrNiMo17-12-2
		1.4435	316L			X2CrNiMo18-14-3
1.4436		316			X3CrNiMo17-13-3	
1.4438		317L			X2CrNiMo18-15-4	
1.4439		(317LN)			X2CrNiMoN17-13-5	
1.4529		UNSN08925			X1NiCrMoCu25-20-7	
1.4539		UNSN08904	0H22N24M4TCu		X1NiCrMoCu25-20-5	
1.4541		321	0H18N10T, 1H18N9T, 1H18N10T	06Ch18N10T, 08Ch18N10T, 09Ch18N10T, 12Ch18N10T	X6CrNiTi18-10	
1.4547		UNSS31254				
1.4550	347, 348	0H18N12Nb	03Ch17N14M3			
1.4571	318Ti	H17N13M2T, H18N10MT	10Ch17N113M2T	X6CrNiMoTi17-12-2		
"DUPLEX"	1.4362	UNSS32304				
	1.4410					
	1.4460	329			X3CrNiMoN27-5-2	
	1.4462	UNSS31803			X2CrNiMoN22-5-3	

# ИЗДЕЛИЯ ПРИВАРНЫЕ

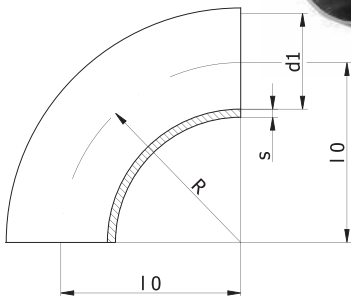
WELDED FITTINGS |  
СВАРНАЯ АРМАТУРА И ФИТИНГИ

AISI 304/304L/316/316L

**Отвод**  
Bend | Отвод DIN 11851

03-01A

- 1,5D и D+100
- DN10 - DN500
- 1,2mm-4,0mm

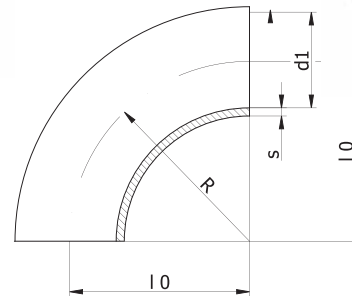


DIN 11851

DN	d1	l0	R	s	Weight [kg]
10	9	26	26	1,5	0,01
15	15	35	35	1,5	0,02
20	19	40	40	1,5	0,04
25	25	50	50	1,5	0,05
32	31	55	55	1,5	0,08
40	37	60	60	1,5	0,10
50	49	70	70	1,5	0,17
65	66	80	80	2	0,4
80	81	90	90	2	0,57
100	100	100	100	2	0,76
125	125	187,5	187,5	2	1,78
150	150	225	225	2	2,75

**Отвод**  
Bend | Отвод SMS

03-01B

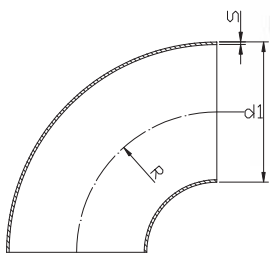


SMS

DN	d1	l0	R	s	Weight [kg]
25	22,6	44	37,5	1,2	0,054
38	35,6	64	57	1,2	0,106
51	48,6	89	76,5	1,2	0,205
63,5	60,3	114	95,3	1,6	0,44
76	72,9	134	114,2	1,6	0,62
101,6	97,6	174	152,5	2	1,32

**Отвод**  
Bend | Отвод EN 10253-3, EN 10253-4

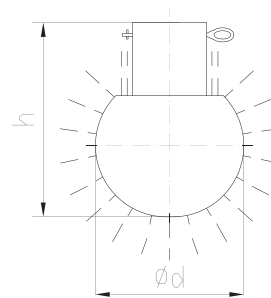
03-01C



DN	d1	R	s	Weight [kg]
10	17,2	28,5	2,0	0,03
15	21,3	28	2,0/3,0	0,04/0,06
20	26,9	29	2,0/3,0	0,05/0,08
25	33,7	38	2,0/3,0	0,09/0,13
32	42,4	48	2,0/3,0	0,15/0,22
40	48,3	57	2,0/3,0	0,20/0,30
50	60,3	76	2,0/3,0	0,34/0,51
65	76,1	95	2,0/3,0	0,55/0,82
80	88,9	114	2,0/3,0	0,78/1,16
100	114,3	152	2,0/3,0	1,34/2,00
125	139,7	190	2,0/3,0	2,06/3,07
150	168,3	229	2,0/3,0	2,99/4,46
200	219,1	305	2,0/3,0	5,20/7,77
250	273,0	381	2,0/3,0	8,11/12,13
300	323,8	457	3,0	17,3
350	355,6	533	3,0	22,2
400	406,4	610	3,0	36,8

**Головка моющая**  
Cleaning ball DIN |

03-02

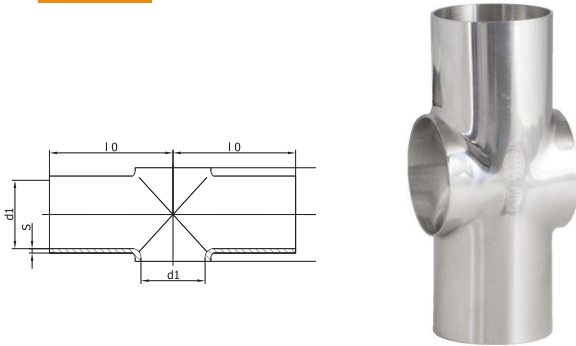


DN	Type	Range (m)	Flow m <sup>3</sup> /h		Ball diameter	
			1 bar	2,5 bar	d	High
10	XI-I	0,5-1	2,1	-	25	37,5
15	YI-I	1-1,5	4,2	-	30	42
20	A2-I	2-2,5	7,7	12,2	40	53
25	B3-I	2-3	11	17,3	64	90
25	B5-I	3-4	17,5	28,1	64	90
32	F4-I	2,5-3,5	13,5	22	64	90
40	C4-I	2,5-3,5	11,8	19,2	64	90
50	D4-I	4-5	28,6	47,1	90	120

**Крестовина**

Cross short | Крестовина короткая

03-03

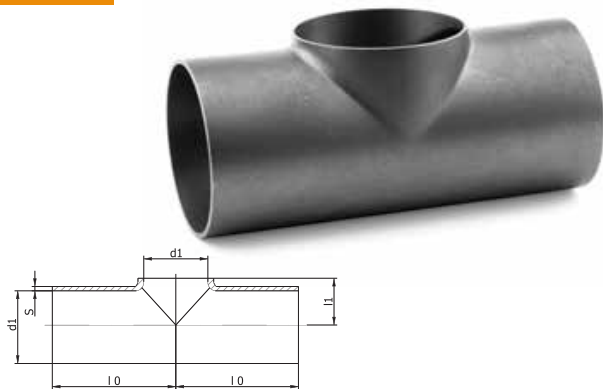


DN	d1	l0	l1	s	Weight [kg]
15	15	35	9,5	1,5	0,04
20	19	40	12	1,5	0,07
25	25	50	15,5	1,5	0,09
32	31	55	19	1,5	0,12
40	37	60	23,5	1,5	0,15
50	49	70	30	1,5	0,24
65	66	80	41	2,0	0,46
80	81	90	48,5	2,0	0,68
100	100	100	58	2,0	0,92
125	125	187	74	2,0	1,97
150	150	225	90	2,0	2,98

**Тройник**

Tee | Тройник DIN 11852, EN 10253-3

03-05



DIN 11852

DN	d1	l0	l1	s	Weight [kg]
10	9	35	6,5	1,5	0,02
15	15	35	9,5	1,5	0,04
20	19	40	12	1,5	0,07
25	25	50	15,5	1,5	0,09
32	31	55	19	1,5	0,12
40	37	60	23,5	1,5	0,15
50	49	70	30	1,5	0,24
65	66	80	41,0	2,0	0,46
80	81	90	48,5	2,0	0,68
100	100	100	58,0	2,0	0,92
125	125	187	74,0	2,0	1,97
150	150	225	90,0	2,0	2,98

**Заглушка сферическая**

End cap | Днище (заглушка под сварку) EN 10253-3

03-04

- DN15 - DN400
- 2mm-3mm



DN	D	H	s	r=D/10	s=D	Weight [kg]
25	28	10	1,5	2,80	28	0,01
32	34	11,5	1,5	3,40	34	0,02
40	40	12,5	1,5	4,00	40	0,02
50	52	15,5	1,5	5,20	52	0,03
65	70	19,5	2	7,00	70	0,08
80	85	22,5	2	8,50	85	0,12
100	104	26,5	2	10,40	104	0,20
125	129	31	2	12,90	129	0,28
150	154	36	2	15,40	154	0,65
200	204	46	2	20,40	204	1,16
250	254	59,5	2	25,40	254	1,60

**Тройник переходной**

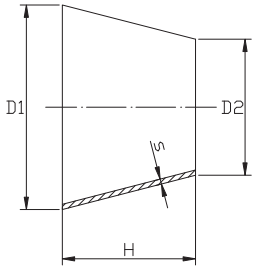
Reducing tee | Тройник переходной DIN 11 852, EN 10253-3

03-06



**Переход концентрический**  
Reducer | Переход DIN

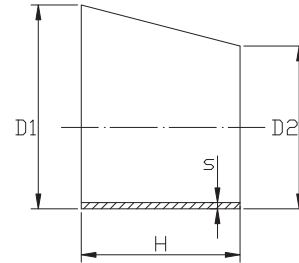
03-07



DN	D1	D2	H	s	Weight [kg]
15/10	19	13	11	1,5	0,08
20/15	23	19	12	1,5	0,04
25/15	29	19	22	1,5	0,03
25/20	29	23	12	1,5	0,07
32/20	35	23	22	1,5	0,08
32/25	35	23	12	1,5	0,08
40/25	41	29	22	1,5	0,08
50/25	53	29	45	1,5	0,13
50/32	53	35	33	1,5	0,15
50/40	53	41	22	1,5	1,18
65/32	70	35	59	2,0	0,18
65/40	70	41	52	2,0	0,19
65/50	70	53	29	2,0	0,19
80/50	85	53	56	2,0	0,21
80/65	85	70	27	2,0	0,22
100/50	104	53	88	2,0	0,22
100/65	104	70	61	2,0	0,23
100/80	104	85	34	2,0	0,24

**Переход эксцентрический**  
Eccentric reducer | Переход эксцентрический DIN

03-08



DN	D1	D2	H	s	Weight [kg]
15/10	19	13	22	1,5	0,08
20/15	23	19		1,5	0,04
25/15	29	19	20	1,5	0,03
25/20	29	23	17	1,5	0,07
32/20	35	23	34	1,5	0,08
32/25	35	23	17	1,5	0,08
40/25	41	29	33	1,5	0,08
50/25	53	29	67	1,5	0,13
50/32	53	35		1,5	0,15
50/40	53	41	33	1,5	1,18
65/32	70	35		2,0	0,18
65/40	70	41	53	2,0	0,19
65/50	70	53	45	2,0	0,19
80/50	85	53	86	2,0	0,21
80/65	85	70	42	2,0	0,22
100/50	104	53		2,0	0,22
100/65	104	70	93	2,0	0,23
100/80	104	85		2,0	0,24

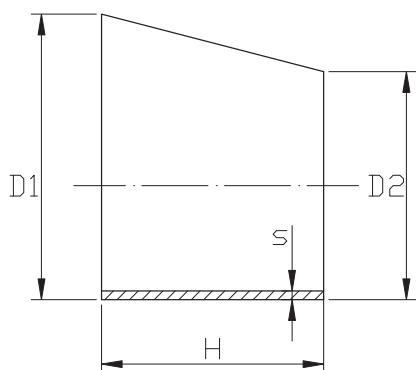
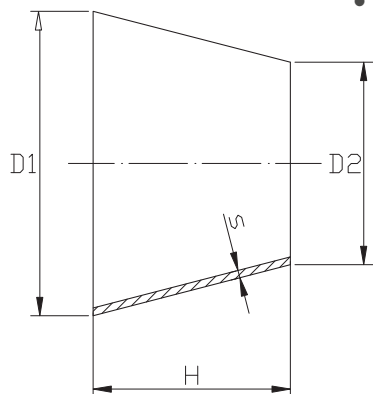


**Переход концентрический и эксцентрический**

Escentric reducer | Переход эксцентрический EN 10253-3

03-11

- DN10 - DN500
- 1,2mm-4,0mm

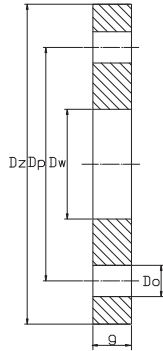


DN	D1	D2	H	s	Weight [kg]
10/6	17,2	13,7	26	2,0	0,02
15/8	21,3	13,7	28	2,0	0,02
15/10	21,3	17,2	28	2,0	0,02
20/15	26,9	21,3	38	2,0	0,04
25/15	33,7	21,3	51	2,0/3,0	0,07/0,10
25/20	33,7	26,9	51	2,0/3,0	0,07/0,11
32/20	42,4	26,9	51	2,0/3,0	0,08/0,13
32/25	42,4	33,7	51	2,0/3,0	0,09/0,14
40/20	48,3	26,9	64	2,0/3,0	0,12/0,18
40/25	48,3	33,7	64	2,0/3,0	0,13/0,19
40/32	48,3	42,4	64	2,0/3,0	0,14/0,21
50/25	60,3	33,7	76	2,0/3,0	0,17/0,26
50/32	60,3	42,4	76	2,0/3,0	0,19/0,29
50/40	60,3	48,3	76	2,0/3,0	0,20/0,31
65/40	76,1	48,3	89	2,0/3,0	0,27/0,41
65/50	76,1	60,3	89	2,0/3,0	0,30/0,45
80/50	88,9	60,3	89	2,0/3,0	0,33/0,50
80/65	88,9	76,1	89	2,0/3,0	0,36/0,55
100/65	114,3	76,1	102	2,0/3,0	0,48/0,73
100/80	114,3	88,9	102	2,0/3,0	0,52/0,78
125/80	139,7	88,9	127	2,0/3,0	0,72/1,09
125/100	139,7	114,3	127	2,0/3,0	0,81/1,21
150/100	168,3	114,3	140	2,0/3,0	0,99/1,49
150/125	168,3	139,7	140	2,0/3,0	1,08/1,62
200/125	219,1	139,7	152	2,0/3,0	1,37/2,05
200/150	219,1	168,3	152	2,0/3,0	1,47/2,21
250/150	273,0	168,3	178	2,0/3,0	1,97/2,96
250/200	273,0	219,1	178	2,0/3,0	2,20/3,30
250/150	273,0	168,3	178	3,0	3,00
300/200	323,9	219,1	203	3,0	3,30
300/250	323,9	273,3	203	3,0	4,60
350/200	355,6	219,1	330	3,0	7,00
350/250	355,6	273,3	330	3,0	7,70

**Фланец плоский**

Flat flange | Фланец плоский EN1092-1/01

03-12

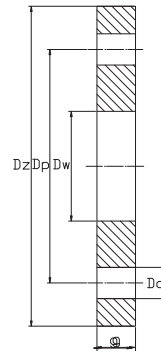


DN	PN	pipe	g	Dz	Dw	Dp	Do	Weight [kg]
10		17,2	14,0	90,0	18	60,0	14	0,60
15		21,3	14,0	95,0	22	65,0	14	0,67
20		26,9	16,0	105,0	27,5	75,0	14	0,86
25		33,7	16,0	115,0	34,5	85,0	14	1,10
32		42,4	18,0	140,0	43,5	100,0	18	1,65
40		48,3	18,0	150,0	49,5	110,0	18	1,86
50		60,3	19,0	165,0	61,5	125,0	18	2,50
65		76,1	20,0	185,0	77,5	145,0	18	3,00
80		88,9	20,0	200,0	90,5	160,0	18	3,79
100		114,3	22,0	220,0	116,0	180,0	18	4,20
125		139,7	22,0	250,0	141,5	210,0	18	5,60
150		168,3	24,0	285,0	170,5	240,0	22	6,70
200		219,1	24,0	340,0	221,8	295,0	22	9,30
250		273,0	24,0	395,0	276,5	350,0	22	12,30
300		324,9	26,0	445	327,5	400	22	13,76
350		355,6	28,0	505	359,5	460	22	22,06

**Фланец плоский**

Flat flange | Фланец плоский ГОСТ 33259-2015

03-13

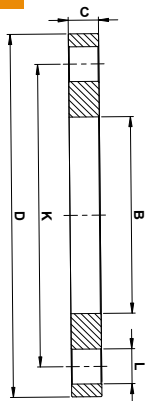


DN	PN	pipe	g	Dz	Dw	Dp	Do	Weight [kg]
10		14,0	14,0	90,0	15	60,0	14	0,60
15		18,0	14,0	95,0	19	65,0	14	0,67
20		25,0	16,0	105,0	26	75,0	14	0,86
25		32,0	18,0	115,0	33	85,0	14	1,10
32		38,0	18,0	135,0	39	100,0	18	1,65
40	16	45,0	20,0	145,0	46	110,0	18	1,86
50		57,0	22,0	160,0	59	125,0	18	2,50
65		76,0	22,0	180,0	78	145,0	18	3,00
80		89,0	26,0	195,0	91	160,0	18	3,79
100		108,0	26,0	215,0	110	180,0	18	4,20
125		133,0	28,0	245,0	135	210,0	18	5,60
150		159,0	28,0	280,0	161	240,0	22	6,70
200		219,0	24,0	335,0	222	295,0	22	9,30
250		273,0	26,0	390,0	273	350,0	22	12,30
300	10	325,0	28,0	440,0	325	400	22	13,76
350		377,0	28,0	500,0	377	460	22	22,06

**Фланец плоский**

Flat flange | Фланец плоский DIN

03-14

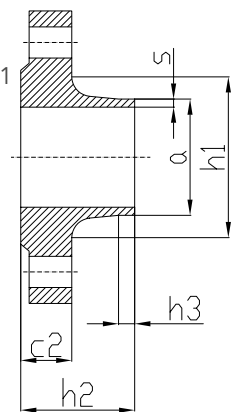


DN	PN	Ø MET	D	K	B	BOLTS		C
						nr	L	
50	16	54	165	125	55,2	4	18	18
65	16	70	185	145	71,5	4	18	18
80	16	84	200	160	85,5	8	18	20
100	16	104	220	180	105,5	8	18	20
125	16	129	250	210	130,8	8	18	22
150	16	154	285	240	156	8	22	22
200	16	204	340	295	206	12	22	26
250	16	254	405	355	257	12	26	29
300	16	304	460	410	307,5	12	26	32
200	10	204	340	295	206	8	22	24
250	10	254	395	350	257	12	22	26
300	10	304	445	400	307,5	12	22	26

**Фланец воротниковый**

Neck flange | фланец воротниковый EN 1092-1/11/B1

03-15

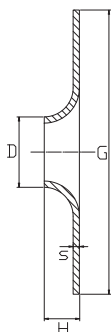


DN	a	c2	h1	h2	h3	s	Weight [kg]
10	17,2	16	22	38	6	1,8	0,70
15	21,3	16	22	38	6	2	0,80
20	26,9	18	26	40	6	2,3	1,00
25	33,7	18	28	40	6	2,6	1,30
32	42,4	18	30	42	6	2,6	1,80
40	48,3	18	32	45	7	2,6	2,20
50	60,3	18	28	45	8	2,9	2,40
65	76,1	18	32	45	10	2,9	3,00
80	88,9	20	34	50	10	3,2	3,80
100	114,3	20	40	52	12	3,6	4,40
125	139,7	22	44	55	12	4,0	5,90
150	168,3	22	44	55	12	4,5	7,40
200	219,1	24	44	62	16	5,9	10,90
250	273	26	46	68	16	6,3	15,00
300	323,9	26	48	68	16	7,1	22,20

### Фланец приварной (отбортовка)

Collar | Отбортовка DIN 2642 • DN15-DN500

03-16

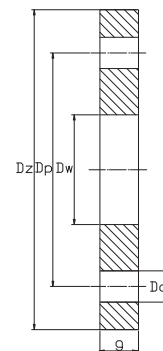


DN	D	G	H	s	Weight [kg]
20	22	58	12	2,0	0,04
25	28	68	15	2,0	0,06
32	34	78	15	2,0	0,07
40	40	88	17	2,0	0,09
50	52	102	20	2,0	0,12
65	70	122	23	2,0	0,21
80	85	138	23	2,0	0,27
100	104	160	28	2,0	0,33
125	129	188	30	2,0	0,45
150	154	212	30	2,0	0,54
200	204	270	30	2,0	0,65
250	254	320	30	2,0	0,80

### Фланец плоский свободный

Loose flange | Фланец свободный

03-17

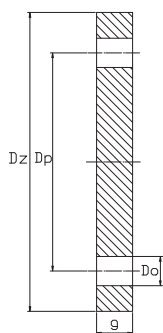


DN	pipe	g	Dz	Dw	Dp	Do	Weight [kg]
10	17,2	12,0	90,0	19,0	60,0	14	0,18
15	21,3	12,0	95,0	24,0	65,0	14	0,19
20	26,9	12,0	105,0	30,0	75,0	14	0,25
25	33,7	12,0	115,0	36,0	85,0	14	0,27
32	42,4	16,0	140,0	46,0	100,0	18	0,56
40	48,3	16,0	150,0	54,0	110,0	18	0,62
50	60,3	16,0	165,0	65,0	125,0	18	0,75
65	76,1	16,0	185,0	81,0	145,0	18	0,90
80	88,9	18,0	200,0	94,0	160,0	18	1,10
100	114,3	18,0	220,0	119,0	180,0	18	1,25
125	139,7	18,0	250,0	144,0	210,0	18	1,60
150	168,3	18,0	285,0	173,0	240,0	22	2,00
200	219,1	20,0	340,0	225,0	295,0	22	2,80
250	273,0	22,0	395,0	279,0	350,0	22	3,80
300	32,9	22,0	445	329	400	22	3,9
350	355,6	22,0	505	362	460	22	5,25
400	406,4	25,0	565	419	515	25	7,2
450	457,2	2530	615	465	565	25	7,81
500	508	28,0	670	517	620	28	9,6
600	609,6	30,0	780	618	725	30	12,9

### Фланец глухой

Blind flange | Фланец заглушка EN 1092-1/05/1  
ГОСТ 33259-2015

03-18

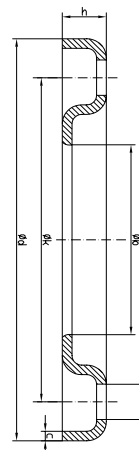


DN	PN	g	Dz	Dp	Do	Weight [kg]
15		16,0	95	65	14	0,77
20		18,0	105	75	14	1,08
25		18,0	115	85	14	1,3
32		18,0	140	100	18	1,93
40		18,0	150	110	18	2,21
50		18,0	165	125	18	3,02
65		18,0	185	145	18	4,83
80		20,0	200	160	18	6,28
100		20,0	220	180	18	7,59
125		22,0	250	210	18	8,47
150		22,0	285	240	22	11,01
200		24,0	340	295	22	16,7
250		26,0	395	350	22	24,33
300		26,0	445	400	22	31,13
350		26,0	505	460	22	40,04

### Фланец свободный | Pressed flange | Фланец свободный прессованный

свободный прессованный DIN 2642 PN 10

03-19



DN	eb	ed	ek	l	c	h	
15	21,3	95	65	13,5	3	12	0,30
20	26,9	105	75	13,5	3	14	0,40
25	33,7	115	85	13,5	3	16	0,50
32	42,4	140	100	17,5	3	16	0,50
40	48,3	150	110	18	4	17,5	0,60
50	60,3	135	125	18	4	19,5	0,60
65	76,1	185	145	18	4	21	0,60
80	88,9	200	160	18	4	21	1,00
100	114,3	200	180	18	4	22	1,20
125	139,7	250	210	18	5	22	1,60
150	168,3	285	240	22	5	26	2,20
200	219,1	340	295	22	6	28	3,40
250	273,0	395	350	22	6	31	4,00
300	323,9	445	400	22	6	34	5,00
350	355,6	505	460	22	8	36	6,10
400	406,4	565	515	26	8	38	7,40
450	457,2	615	565	26	8	40	9,70
500	508,0	670	620	26	8	40	12,10

DN	ISO	DIN 11850 [mm]	CAL	SMS [mm]	DIN [mm]	METR [mm]	ASTM [mm]
6	10,0		1/8"				10,3
8	13,5		1/4"				13,7
10	17,2	10,0	3/8"		14,0	10,0	17,1
15	21,3	18,0	1/2"		20,0	18,0	21,3
20	26,9	22,0	3/4"		25,0	23,0	26,7
25	33,7	28,0	1"	25,5	30,0	28,0	33,4
32	42,4	34,0	1 1/4"	32,0	38,0	35,0	42,2
40	48,3	40,0	1 1/2"	38,0	44,5	43,0	48,3
50	60,3	52,0	2"	51,0	57,0	54,0	60,3
63				63,5			
76				76,1			
65	76,1	70,0	2 1/2"		76,1	69,0	73,0
80	88,9	85,0	3"		88,9	84,0	88,9
100	114,3	104,0	4"	101,6	108,0	104,0	114,3
125	139,7	129,0	5"	129,0	133,0	129,0	141,3
150	168,3	154,0	6"		159,0	154,0	168,3
200	219,1	204,0	8"		216,0	207,4	219,1
250	273,0	254,0	10"		267,0	254,0	273,0
300	323,9	304,0	12"		318,0	304,0	323,9
350	355,6	354,0	14"		368,0	354,0	355,6
400	406,4		16"		419,0		406,4
450	457,2		18"		459,0		457,2
500	508,0		20"		521,0		508,0
600	609,6		24"		622,0		609,6
700	711,2		28"		720,0		711,2
800	812,8		32"		820,0		812,8
900	914,4		36"		920,0		914,4
1000	1016,0		40"		1020,0		

# СТАЛЬ НЕРЖАВЕЮЩАЯ

STAINLESS STEEL |  
НЕРЖАВЕЮЩАЯ СТАЛЬ



**AlfaFood**  
inox

Холоднокатаный лист EN 10088-4, EN 10028-7, ISO 9445-2 | Cold rolled sheets

AUSTENITIC   АУСТЕНИТНЫЕ			
0,4 mm	1000 x 2000		
	1000 x 2000		
0,5-0,8 mm	1250 x 2500	1.4301 / 304	
	1500 x 3000	1.4307 / 304L	
1,0-8,0 mm	1000 x 2000	1.4404 / 316L	2B
		1.4541 / 321	
	1250 x 2500	1.4571 / 316Ti	
	1500 x 3000		
	2000 x 4000		
0,4 mm	1000 x 2000		
	1000 x 2000		
	1250 x 2500	1.4301 / 304	BA
	1000 x 2000		
	1250 x 2500		
1500 x 3000			
1500 x 3000			
FERRITIC   ФЕРРИТНЫЕ			
0,4 mm	1000 x 2000		
	1000 x 2000		
0,5-0,6 mm	1250 x 2500	1.4016 / 430	BA
	1000 x 2000		
0,8-3,0 mm	1250 x 2500		
	1500 x 3000		
0,8-2,0 mm	1000 x 2000		
	1250 x 2500	1.4509 / 441	2B
	1500 x 3000		

Горячекатаный лист EN 10088-2, EN 10088-4, EN 10028-7, EN ISO 18286, EN ISO 9444-2 | Hot rolled sheets











AUSTENITIC   АУСТЕНИТНЫЕ			
3 mm	1000 x 2000		
	1250 x 2500		
	1500 x 3000		
4-12 mm	1000 x 2000	1.4301 / 304	1D
	1250 x 2500	1.4307 / 304L	
	1500 x 3000	1.4404 / 316L	
	1500 x 6000	1.4541 / 321	
	2000 x 4000	1.4571 / 316Ti	
	2000 x 6000		
15-40 mm	1000 x 2000		
	1250 x 2500		
	1500 x 3000		
	2000 x 4000		
3 mm	1000 x 2000		
	1250 x 2500		
	1000 x 2000	1.4301 / 304	РИФЛЁННЫЙ DIN 59220
4-6 mm	1.4307 / 304L		
1250 x 2500			
	1500 x 3000		

Листы шлифованные /браш | Polished/brushed sheets

0,6-5,0 mm	1000 x 2000	1.4301 / 304	
		1.4307 / 304L	
	1250 x 2500	1.4404 / 316L	180 / 240 /
		1.4016 / 430	320 / 400 /duplo/scotch brite
	1500 x 3000	1.4509 / 441	

# СОРТОВОЙ ПРОКАТ

## STAINLESS STEEL | НЕРЖАВЕЮЩАЯ СТАЛЬ

Product Продукт	Dimensions Размеры	Grades Сплав	Additional Information Доп. информации
 Round bars Прутки круглые	3-400 mm L = 3000,4000,6000 mm	1.4301 1.4305 1.4404 1.4021 1.4021QT	EN 10088-3
 Square bars Прутки квадратные	8-100 mm L = 3000, 6000 mm	1.4301	EN 10088-3
 Hexagonal bars 6-гранные прутки	10-46 mm L = 3000 mm	1.4301 1.4305	EN 10088-3
 Angle bars L - профили	20x20x3-150x100x10 mm L = 6000 mm	1.4301 1.4404 1.4571	EN 10088-3
 U - profiles U - профили	80x45x6x8-120x55x7x9 mm L = 6000 mm	1.4301	EN 10088-3
 Hollow bars Штоки полые	32x20-125x100 mm L = 6000 mm	1.4306	EN 10088-3
 Tubes Трубы	6x1-508x4 mm L = 6000 mm	1.4301 1.4307 1.4404	EN 10217-7 EN 10296-2 EN 10357 brushed, pickled, polished, mirror-polished
 Square tubes Прутки квадратные	10x10x1-200x200x5 mm L = 6000 mm	1.4301 1.4307 1.4404	EN 10219-2 brushed, polished, mirror-polished
 Rectangular tubes Прямоугольные трубы	20x10x1,2-200x100x5 mm L = 6000 mm	1.4301 1.4307 1.4404	EN 10219-2 brushed, polished, mirror-polished
 Flat bars Полоса	15x3-150x50 mm L = 4000, 6000 mm	1.4301 1.4404	EN 10088-3

### Профильная труба квадратная | Square profiles

dimensions	weight kg/m	dimensions	weight kg/m	dimensions	weight kg/m
10x10x1,0	0,294	35x35x1,5	1,618	80x80x2,0	5,003
15x15x1,0	0,453	35x35x2,0	2,132	80x80x3,0	7,430
15x15x1,5	0,661	40x40x1,5	1,857	100x100x2,0	6,279
20x20x1,0	0,613	40x40x2,0	2,451	100x100x3,0	9,343
20x20x1,5	0,900	40x40x3,0	3,602	100x100x4,0	12,416
20x20x2,0	1,175	50x50x1,5	2,336	120x120x2,0	7,556
25x25x1,5	1,140	50x50x2,0	3,089	120x120x3,0	11,259
25x25x2,0	1,494	50x50x3,0	4,559	150x150x3,0	14,128
30x30x1,5	1,397	60x60x2,0	3,737	150x150x4,0	18,728
30x30x2,0	1,813	60x60x3,0	5,516		

### Профильная труба прямоугольная | Rectangular profiles

dimensions	weight kg/m	dimensions	weight kg/m	dimensions	weight kg/m
20x10x1,5	0,661	50x40x2,0	2,770	80x60x3,0	6,473
25x15x1,5	0,900	60x30x1,5	2,097	100x50x2,0	4,657
35x15x1,5	1,048	60x30x2,0	2,770	100x50x3,0	6,952
30x20x1,5	1,140	60x40x2,0	3,089	100x60x2,0	5,000
40x20x2,0	1,813	60x40x3,0	4,559	100x60x3,0	7,430
40x20x3,0	2,646	80x40x1,5	2,814	120x60x3,0	8,387
50x20x1,5	1,618	80x40x2,0	3,727	120x80x3,0	9,343
55x25x2,0	2,292	80x40x3,0	5,516	150x100x4,0	15,520
50x30x2,0	2,451	80x60x2,0	4,365	200x100x4,0	18,620



# AlfaFood

inox

+7 920 331 50 06

+7 920 336 66 88

+7 920 329 56 55

[info.afinox@gmail.com](mailto:info.afinox@gmail.com)